

## Human CD33, His Tag, HEK293

<b>Catalog Number</b>	LDG065PHM
<b>Package</b>	5 µg / 20 µg / 100 µg / Customized package

For full product information, images and publications, please visit [our website](#).



### Specifications

#### Species of Origin

Human

#### Expression System

HEK293

#### Affinity Tag

His Tag (C-term)

#### Storage Buffer

Lyophilized from a 0.2 µm filtered solution of PBS, 0.1 M Arginine, pH 7.4.

#### Purity

>95% as determined by SDS-PAGE analysis.

#### Molecular weight

The protein has a calculated MW of 27.67 kDa. The protein migrates as 38-50 kDa under reducing condition (SDS-PAGE analysis).

#### Activity

Measured by its ability to support the adhesion of human red blood cells, with the ED50 being < 4 µg/mL.

#### Endotoxin Level

<0.1 EU per 1 µg of the protein by the LAL method.

#### Mycoplasma

Not detected.

#### Form

Lyophilized.

### Background

#### Background

CD33 is a myeloid cell surface antigen that regulates immune cell activity through inhibitory signaling. It is implicated in acute myeloid leukemia and serves as a therapeutic target.

#### Synonyms

Myeloid cell surface antigen CD33, Sialic acid-binding Ig-like lectin 3, Siglec-3, gp67, CD33

#### Tainan Headquarters

+886-6-2536677

bd@leadgene.com.tw

#### Innovation & Research Center

+886-2-27065528

#### CLD Center

+886-6-2536677

**Uniprot ID**

P20138

**Sequence Note**

Asp 18 - His 259

**Instruction****Reconstitution**

It is recommended to reconstitute the lyophilized protein in sterile H<sub>2</sub>O to a concentration not less than 200 µg/mL and incubate the stock solution for at least 20 min to ensure sufficient re-dissolved.

**Stability & Storage**


This product is stable after storage at:

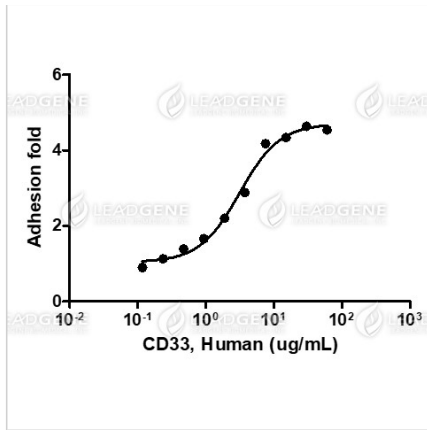
- -20°C for 12 months in lyophilized state from date of receipt.
- -20°C or -80°C for 1 month under sterile conditions after reconstitution.

Avoid repeated freeze/thaw cycles.

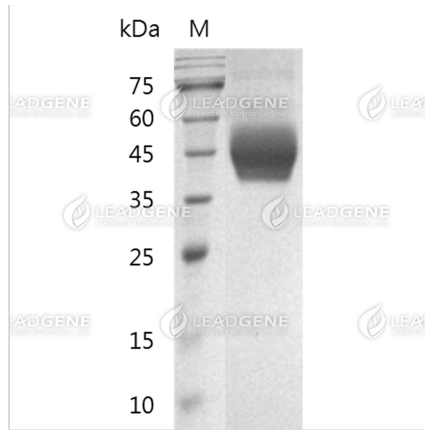
**Shipping**

The product is shipped with polar packs. Upon receipt, store it immediately at -20°C or lower for long term storage.

**Image****Tainan Headquarters** +886-6-2536677 [bd@leadgene.com.tw](mailto:bd@leadgene.com.tw)**Innovation & Research Center** +886-2-27065528**CLD Center** +886-6-2536677



Human CD33 Protein, His Tag, HEK293 (LDG065PHM) supports the adhesion of human red blood cells, with the ED50 being < 4 µg/mL.



SDS-PAGE analysis of recombinant human CD33.

**Disclaimer :** For Research Use or Further Manufacturing Only.