

## Human PGA5, His Tag, E. coli

<b>Catalog Number</b>	LDG062PHE
<b>Package</b>	5 µg / 20 µg / 100 µg / Customized package

For full product information, images and publications, please visit [our website](#).



### Specifications

#### Species of Origin

Human

#### Affinity Tag

His Tag (C-term)

#### Purity

>95% as determined by SDS-PAGE analysis.

#### Endotoxin Level

<0.1 EU per 1 µg of the protein by the LAL method.

#### Expression System

Escherichia coli

#### Storage Buffer

Lyophilized from a 0.2 µm filtered solution of PBS, pH 8.0.

#### Molecular weight

The protein has a calculated MW of 42.80 kDa. The protein migrates as 40-45 kDa under reducing condition (SDS-PAGE analysis).

#### Form

Lyophilized

### Background

#### Background

Pepsinogen A5 (PGA5) is a aspartic protease that secreted from gastric mucosa and located in stomach. Pepsinogen A5 is a 41 kDa protein containing 388 amino acid residues. Pepsinogen A5 is a precursor protein of digestive enzyme pepsin which breaks down the proteins into the small chain peptides that are absorbed by the small intestine.

#### Synonyms

Pepsin A-5, Pepsinogen-5

**Uniprot ID**

#P0DJJD9

**Sequence Note**

Met1-Ala388

**Instruction**
**Reconstitution**

It is recommended to reconstitute the lyophilized protein in sterile H<sub>2</sub>O to a concentration of 200 µg/mL and incubate the stock solution for at least 20 min to ensure sufficient re-dissolved.

**Stability & Storage**

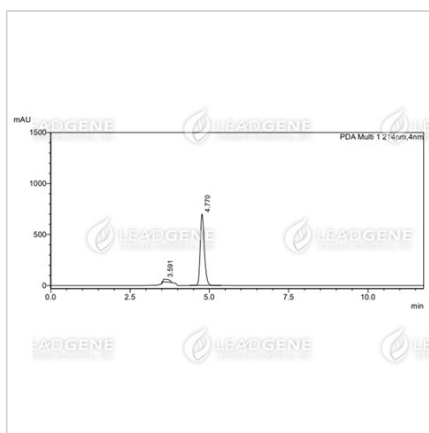
This product is stable after storage at:

- -20°C for 12 months in lyophilized state from date of receipt.
- -20°C or -80°C for 1 month under sterile conditions after reconstitution.

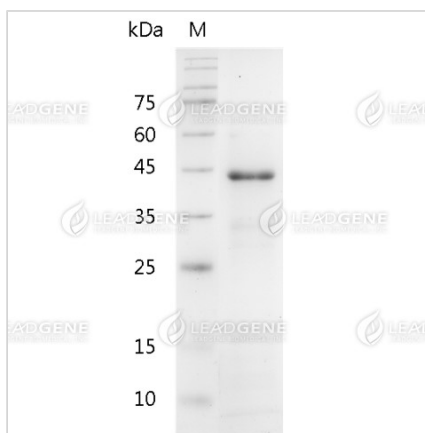
Avoid repeated freeze/thaw cycles.

**Shipping**

The product is shipped with polar packs. Upon receipt, store it immediately at -20°C or lower for long term storage.



**Image**


The purity of recombinant human PGA5 is greater than 95% as determined by RP-HPLC.



SDS-PAGE analysis of recombinant human PGA5.

**Disclaimer :** For Research Use or Further Manufacturing Only.

**Tainan Headquarters** +886-6-2536677 [bd@leadgene.com.tw](mailto:bd@leadgene.com.tw)**Innovation & Research Center** +886-2-27065528**CLD Center** +886-6-2536677