

Human HDGF, His Tag, E. coli

| | |
|-----------------------|--------------------------------------------|
| Catalog Number | LDG059PHE |
| Package | 5 µg / 20 µg / 100 µg / Customized package |

For full product information, images and publications, please visit [our website](#).



Specifications

Species of Origin

Human

Affinity Tag

His Tag (C-term)

Purity

>98% as determined by SDS-PAGE analysis.

Endotoxin Level

<0.1 EU per 1 µg of the protein by the LAL method.

Expression System

Escherichia coli

Storage Buffer

Lyophilized from a 0.2 µm filtered solution of PBS, pH 7.4.

Molecular weight

The protein has a calculated MW of 27.60 kDa. The protein migrates as 45 kDa under reducing condition (SDS-PAGE analysis).

Form

Lyophilized

Background

Background

Heparin binding Growth Factors (HDGF) is a 27.60 kDa hepatoma-derived Growth Factors with 246 amino acid residues. HDGF is expressed from mitochondria and proteasome. Functionally, it is a potent mitogen, stimulating the growth of vascular smooth muscle cells, hepatoma cells and endothelial cells, acting as a transcriptional repressor.

Synonyms

Hepatoma-derived Growth Factors, High mobility group protein 1-like 2, HMG-1L2

Tainan Headquarters

+886-6-2536677

bd@leadgene.com.tw

Innovation & Research Center

+886-2-27065528

CLD Center

+886-6-2536677

Uniprot ID

#P51858

Sequence Note

Met1-Leu240

Instruction
Reconstitution

It is recommended to reconstitute the lyophilized protein in sterile H₂O to a concentration of 200 µg/mL and incubate the stock solution for at least 20 min to ensure sufficient re-dissolved.

Stability & Storage

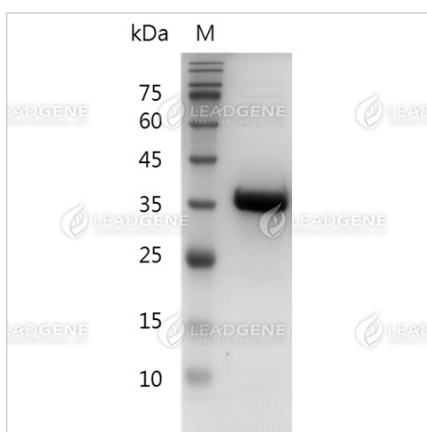
This product is stable after storage at:

- -20°C for 12 months in lyophilized state from date of receipt.
- -20°C or -80°C for 1 month under sterile conditions after reconstitution.

Avoid repeated freeze/thaw cycles.

Shipping

The product is shipped with polar packs. Upon receipt, store it immediately at -20°C or lower for long term storage.

Image


SDS-PAGE analysis of recombinant human HDGF.

Disclaimer : For Research Use or Further Manufacturing Only.

Tainan Headquarters

+886-6-2536677

bd@leadgene.com.tw

Innovation & Research Center

+886-2-27065528

CLD Center

+886-6-2536677

Tainan Headquarters

☎ +886-6-2536677

✉ bd@leadgene.com.tw

Innovation & Research Center

☎ +886-2-27065528

CLD Center

☎ +886-6-2536677