

Mouse IL-36 Alpha, His Tag, E. coli

Catalog Number	LDG057PME
Package	5 µg / 20 µg / 100 µg / Customized package

For full product information, images and publications, please visit [our website](#).



Specifications

Species of Origin

Mouse

Affinity Tag

His Tag (C-term)

Purity

>98% as determined by SDS-PAGE analysis.

Activity

Measure by its ability to induce IL-6 secretion in 3T3 cells. The ED₅₀ for this effect is <15 ng/mL. The specific activity of recombinant mouse IL-36 alpha is > 1 x 10⁵ IU/mg.

Form

Lyophilized

Expression System

Escherichia coli

Storage Buffer

Lyophilized from a 0.2 µm filtered solution of PBS, pH 7.4.

Molecular weight

The protein has a calculated MW of 18.82 kDa. The protein migrates as 17-25 kDa under reducing condition (SDS-PAGE analysis).

Endotoxin Level

<0.1 EU per 1 µg of the protein by the LAL method.

Background

Tainan Headquarters

+886-6-2536677

bd@leadgene.com.tw

Innovation & Research Center

+886-2-27065528

CLD Center

+886-6-2536677

Background

Interleukin 36 alpha (IL-36 alpha) is a 17.76 kDa cytokine with 160 amino acid residues. IL-36 alpha is an IL-1 family member, which binds to the Interleukin-1 receptor and is expressed in the lung, stomach, and placenta. IL-36 alpha is critical in inflammatory responses and stimulates the production of proinflammatory cytokines, such as IL-12, IL-1 β , IL-6, and TNF- α . It also induces the generation of IFN γ , IL-4, and IL-17 in CD4+ T cells.

Uniprot ID

#Q9JLA2

Synonyms

Interleukin-36 alpha, FIL1 epsilon, Interleukin-1 epsilon, IL-1 epsilon, Interleukin-1 family member 6, IL-1F6, Interleukin-1 homolog 1, IL-1H1

Sequence Note

Met1-His160

Instruction

Reconstitution

It is recommended to reconstitute the lyophilized protein in sterile H₂O to a concentration of 200 μ g/mL and incubate the stock solution for at least 20 min to ensure sufficient re-dissolved.

Stability & Storage

This product is stable after storage at:

- -20°C for 12 months in lyophilized state from date of receipt.
- -20°C or -80°C for 1 month under sterile conditions after reconstitution.

Avoid repeated freeze/thaw cycles.

Shipping

The product is shipped with polar packs. Upon receipt, store it immediately at -20°C or lower for long term storage.

Image

Tainan Headquarters

+886-6-2536677

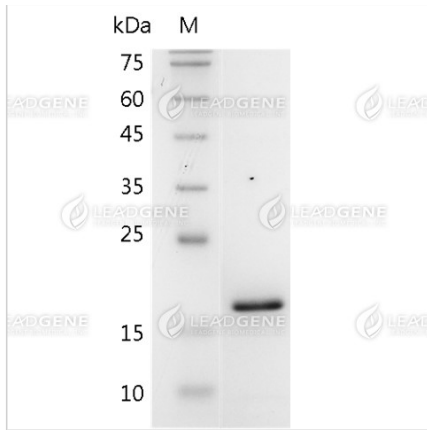
✉ bd@leadgene.com.tw

Innovation & Research Center

+886-2-27065528

CLD Center

+886-6-2536677



SDS-PAGE analysis of recombinant mouse IL-36 Alpha.

Disclaimer : For Research Use or Further Manufacturing Only.