

Mouse BTLA, His Tag, CHO

Catalog Number	LDG056PMM
Package	5 µg / 20 µg / 100 µg / Customized package

For full product information, images and publications, please visit [our website](#).



Specifications

Species of Origin

Mouse

Affinity Tag

His Tag (C-term)

Purity

>95% as determined by SDS-PAGE analysis.

Endotoxin Level

<0.1 EU per 1 µg of the protein by the LAL method.

Form

Lyophilized

Expression System

CHO

Storage Buffer

Lyophilized from a 0.2 µm filtered solution of PBS, pH 7.4.

Molecular weight

The protein has a calculated MW of 17.37 kDa. The protein migrates as 30-60 kDa under reducing condition (SDS-PAGE analysis).

Mycoplasma

Not detected

Background

Background

BTLA (B- and T-lymphocyte attenuator) is an inhibitory receptor expressed on lymphocytes, playing a role in regulating immune responses.

Synonyms

B- and T-lymphocyte attenuator, B- and T-lymphocyte-associated protein, CD272

Tainan Headquarters

+886-6-2536677

bd@leadgene.com.tw

Innovation & Research Center

+886-2-27065528

CLD Center

+886-6-2536677

Uniprot ID

Q7TSA3

Sequence Note

Met1-Gly176

Instruction
Reconstitution

It is recommended to reconstitute the lyophilized protein in sterile H₂O to a concentration not less than 200 µg/mL and incubate the stock solution for at least 20 min to ensure sufficient re-dissolved.

Stability & Storage

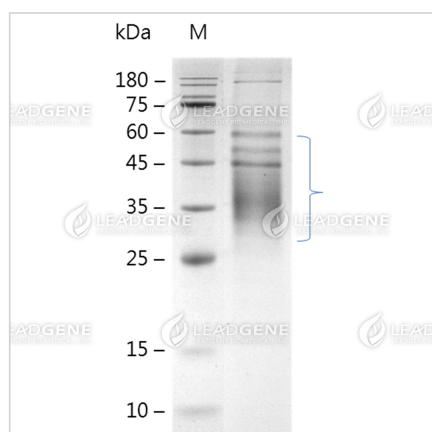
This product is stable after storage at:

- -20°C for 12 months in lyophilized state from date of receipt.
- -20°C or -80°C for 1 month under sterile conditions after reconstitution.

Avoid repeated freeze/thaw cycles.

Shipping

The product is shipped with polar packs. Upon receipt, store it immediately at -20°C or lower for long term storage.

Image


SDS-PAGE analysis of recombinant mouse BTLA.

Disclaimer : For Research Use or Further Manufacturing Only.

Tainan Headquarters

+886-6-2536677

bd@leadgene.com.tw

Innovation & Research Center

+886-2-27065528

CLD Center

+886-6-2536677

Tainan Headquarters

☎ +886-6-2536677

✉ bd@leadgene.com.tw

Innovation & Research Center

☎ +886-2-27065528

CLD Center

☎ +886-6-2536677