

## Human MMP7 (proenzyme), His Tag, E. coli

<b>Catalog Number</b>	LDG055PHE
<b>Package</b>	5 µg / 20 µg / 100 µg / Customized package

For full product information, images and publications, please visit [our website](#).



### Specifications

#### Species of Origin

Human

#### Expression System

Escherichia coli

#### Affinity Tag

His Tag (C-term)

#### Storage Buffer

Lyophilized from a 0.2 µm filtered solution of PBS, pH 8.0.

#### Purity

>95% as determined by SDS-PAGE analysis.

#### Molecular weight

The protein has a calculated MW of 30.47 kDa. The protein migrates as 26 kDa under reducing condition (SDS-PAGE analysis).

#### Endotoxin Level

<0.1 EU per 1 µg of the protein by the LAL method.

#### Form

Lyophilized

### Background

#### Tainan Headquarters

+886-6-2536677

bd@leadgene.com.tw

#### Innovation & Research Center

+886-2-27065528

#### CLD Center

+886-6-2536677

### Background

Matrix metalloproteinase-7 proenzyme (proMMP-7) is a 30.47 kDa matrix metalloproteinases with 273 amino acid residues. MMP-7 restricted production by normal mucosal and exocrine gland epithelial cells, as well as by carcinoma cells. Functionally, it involved breakdown of extracellular matrix (casein, gelatins of types I, III, IV, and V, and fibronectin) in normal physiological processes and disease processes. MMP-7 is contributed to early tumor development during carcinogenesis. proMMP7 activation by trypsin occurs via an intermediate cleaved at Lys50-Asn51.

### Uniprot ID

#P09237

### Synonyms

Matrin, Matrix metalloproteinase-7, MMP-7, Pump-1 protease, Uterine metalloproteinase, Matrilysin

### Sequence Note

Met1-Lys276

## Instruction

### Reconstitution

It is recommended to reconstitute the lyophilized protein in sterile H<sub>2</sub>O to a concentration not less than 200 µg/mL and incubate the stock solution for at least 20 min to ensure sufficient re-dissolved.

### Stability & Storage

This product is stable after storage at:

- -20°C for 12 months in lyophilized state from date of receipt.
- -20°C or -80°C for 1 month under sterile conditions after reconstitution.

Avoid repeated freeze/thaw cycles.

### Shipping

The product is shipped with polar packs. Upon receipt, store it immediately at -20°C or lower for long term storage.

## Image

### Tainan Headquarters

+886-6-2536677

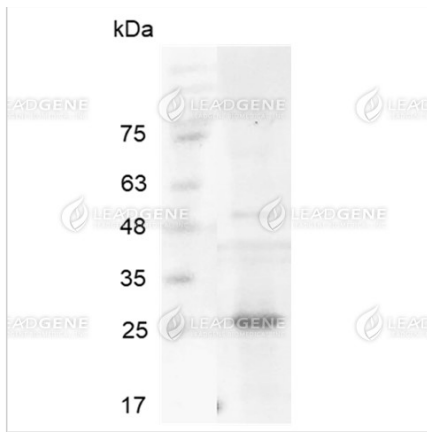
bd@leadgene.com.tw

### Innovation & Research Center

+886-2-27065528

### CLD Center

+886-6-2536677



SDS-PAGE analysis of recombinant  
human MMP7 (proenzyme).

**Disclaimer :** For Research Use or Further Manufacturing Only.