

Mouse IL-31, His Tag, E. coli

Catalog Number	LDG054PME
Package	5 µg / 20 µg / 100 µg / Customized package

For full product information, images and publications, please visit [our website](#).



Specifications

Species of Origin

Mouse

Affinity Tag

His Tag (C-term)

Purity

>95% as determined by SDS-PAGE analysis.

Endotoxin Level

<0.1 EU per 1 µg of the protein by the LAL method.

Expression System

Escherichia coli

Storage Buffer

Lyophilized from a 0.2 µm filtered solution of PBS, pH 7.4.

Molecular weight

The protein has a calculated MW of 16.56 kDa.
The protein migrates about 17 kDa under reducing condition (SDS-PAGE analysis).

Form

Lyophilized

Background

Tainan Headquarters

+886-6-2536677

bd@leadgene.com.tw

Innovation & Research Center

+886-2-27065528

CLD Center

+886-6-2536677

Background

Interleukin 31 (IL-31) is a 15.65 kDa cytokine with 141 amino acid residues. IL-31 is mainly secreted from Th2 cells and binds to a receptor called IL-31RA. Upon binding to IL-31RA, IL-31 activates several signal pathways like MAPK, PI3K/AKT, and Jak/STAT pathways. It is critical in regulating many biological functions, such as cell proliferation, hematopoiesis, induction of cytokines, inflammation, and immune response. It also responds to an antigen by facilitating cell-mediated immunity.

Uniprot ID

#Q6EAL8

Synonyms

Interleukin-31, IL-31

Sequence Note

Thr24-Cys163

Instruction

Reconstitution

It is recommended to reconstitute the lyophilized protein in sterile H₂O to a concentration of 200 µg/mL and incubate the stock solution for at least 20 min to ensure sufficient re-dissolved.

Stability & Storage

This product is stable after storage at:

- -20°C for 12 months in lyophilized state from date of receipt.
- -20°C or -80°C for 1 month under sterile conditions after reconstitution.

Avoid repeated freeze/thaw cycles.

Shipping

The product is shipped with polar packs. Upon receipt, store it immediately at -20°C or lower for long term storage.

Image

Tainan Headquarters

+886-6-2536677

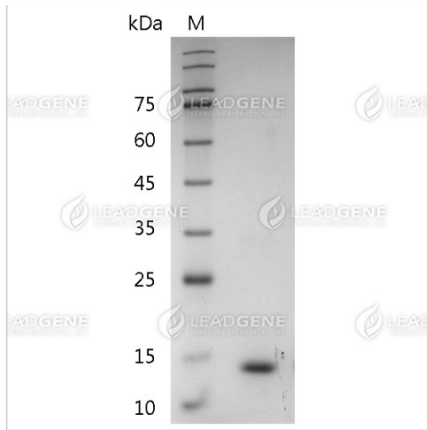
✉ bd@leadgene.com.tw

Innovation & Research Center

+886-2-27065528

CLD Center

+886-6-2536677



SDS-PAGE analysis of recombinant mouse IL-31.

Disclaimer : For Research Use or Further Manufacturing Only.