

## Mouse IL-30, His Tag, E. coli

Catalog Number	LDG053PME
Package	5 µg / 20 µg / 100 µg / Customized package

For full product information, images and publications, please visit [our website](#).



### Specifications

#### Species of Origin

Mouse

#### Affinity Tag

His Tag (C-term)

#### Purity

>98% as determined by SDS-PAGE analysis.

#### Activity

Measure by its ability to protect HepG2 cells infected with encephalomyocarditis (EMC) virus. The ED<sub>50</sub> for this effect is <5 ng/mL.

#### Form

Lyophilized

#### Expression System

Escherichia coli

#### Storage Buffer

Lyophilized from a 0.2 µm filtered solution of PBS, pH 7.4.

#### Molecular weight

The protein has a calculated MW of 24.51 kDa.  
The protein migrates about 25 kDa under reducing condition (SDS-PAGE analysis).

#### Endotoxin Level

<0.1 EU per 1 µg of the protein by the LAL method.

### Background

#### Tainan Headquarters

+886-6-2536677

bd@leadgene.com.tw

#### Innovation & Research Center

+886-2-27065528

#### CLD Center

+886-6-2536677

### Background

Interleukin 30 (IL-30) forms one chain of the heterodimeric cytokine called interleukin 27 (IL-27), thus it is also called IL27 p28, it predicts a molecular mass of 24.9 kDa. IL-30, the p28 subunit that forms IL-27 together with EBI3 and is also known as IL-27 p28 or IL-27A, has been considered a surrogate to represent IL-27. It was initially thought to be an IL-12-like cytokine promoting Th1 immunity because of its ability to induce T-bet and IL-12R $\beta$ 2 expression through STAT1 activation during Th1 differentiation.

### Uniprot ID

#Q8K3I6

### Synonyms

Interleukin-27 subunit alpha, IL-27 subunit alpha, IL-27-A, IL27-A, p28

### Sequence Note

Phe29-Ser234

## Instruction

### Reconstitution

It is recommended to reconstitute the lyophilized protein in sterile H<sub>2</sub>O to a concentration of 200  $\mu$ g/mL and incubate the stock solution for at least 20 min to ensure sufficient re-dissolved.

### Stability & Storage

This product is stable after storage at:

- -20°C for 12 months in lyophilized state from date of receipt.
- -20°C or -80°C for 1 month under sterile conditions after reconstitution.

Avoid repeated freeze/thaw cycles.

### Shipping

The product is shipped with polar packs. Upon receipt, store it immediately at -20°C or lower for long term storage.

## Image

### Tainan Headquarters

+886-6-2536677

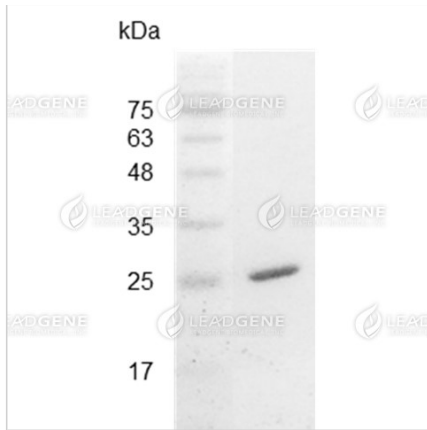
✉ [bd@leadgene.com.tw](mailto:bd@leadgene.com.tw)

### Innovation & Research Center

+886-2-27065528

### CLD Center

+886-6-2536677



SDS-PAGE analysis of recombinant mouse IL-30.

**Disclaimer :** For Research Use or Further Manufacturing Only.