

Human CXCL12 (aa 24-88), His Tag, E. coli

Catalog Number	LDG053PHE
Package	5 µg / 20 µg / 100 µg / Customized package

For full product information, images and publications, please visit [our website](#).



Specifications

Species of Origin

Human

Affinity Tag

His Tag (C-term)

Purity

>98% as determined by SDS-PAGE analysis.

Activity

Measure by its ability to chemoattract human THP1 cells. Chemotactic activity was observed at a concentration of 10 ng/mL.

Form

Lyophilized

Expression System

Escherichia coli

Storage Buffer

Lyophilized from a 0.2 µm filtered solution containing 20 mM sodium citrate, 0.2 M NaCl, pH 4.5.

Molecular weight

The protein has a calculated MW of 8.55 kDa. The protein migrates as 10 kDa under reducing condition (SDS-PAGE analysis).

Endotoxin Level

<0.1 EU per 1 µg of the protein by the LAL method.

Background

Tainan Headquarters

+886-6-2536677

bd@leadgene.com.tw

Innovation & Research Center

+886-2-27065528

CLD Center

+886-6-2536677

Background

C-X-C motif chemokine 12 (CXCL12) also named stromal cell-derived factor 1 (SDF-1), which is a chemokine of the intercrine alpha family. CXCL12 is a 19.5kDa protein containing 167 amino acid residues. The function of CXCL12 include the hematopoiesis, angiogenesis embryogenesis, inflammation and angiogenesis. CXCL12 activated by the IL-1, TNF or lipopolysaccharide and induce the immune response in leukocytes.

Uniprot ID

P48061

Synonyms

Stromal cell-derived factor 1, SDF-1, C-X-C motif chemokine 12, Intercrine reduced in hepatomas, IRH, hIRH, Pre-B cell growth-stimulating factor, PBSF, SDF-1-beta, 3-72, SDF-1-alpha, 3-67

Sequence Note

Val24-Asn88

Instruction

Reconstitution

It is recommended to reconstitute the lyophilized protein in sterile H₂O to a concentration of 200 µg/mL and incubate the stock solution for at least 20 min to ensure sufficient re-dissolved.

Stability & Storage

This product is stable after storage at:

- -20°C for 12 months in lyophilized state from date of receipt.
- -20°C or -80°C for 1 month under sterile conditions after reconstitution.

Avoid repeated freeze/thaw cycles.

Shipping

The product is shipped with polar packs. Upon receipt, store it immediately at -20°C or lower for long term storage.

Image

Tainan Headquarters

+886-6-2536677

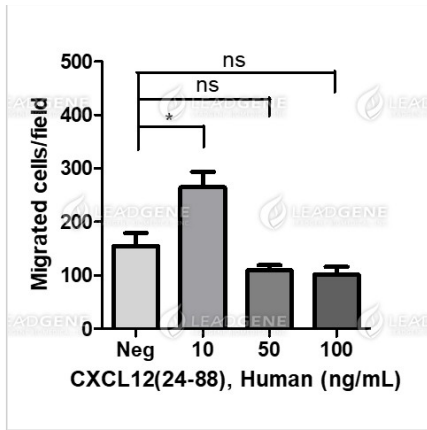
✉ bd@leadgene.com.tw

Innovation & Research Center

+886-2-27065528

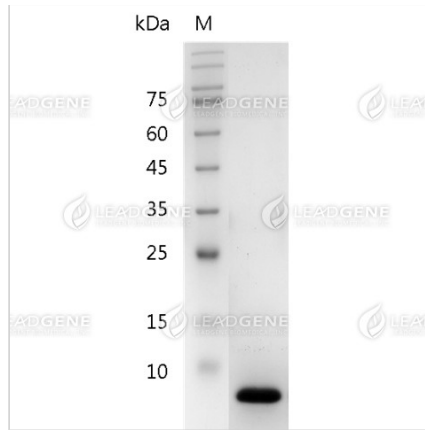
CLD Center

+886-6-2536677



Activity analysis of recombinant Human CXCL12 (aa 24-88), His Tag, E. coli.

Measure by its ability to chemoattract human THP1 cells. Chemotactic activity was observed at a concentration of 10 ng/mL.



SDS-PAGE analysis of recombinant human CXCL12 (aa 24-88).

Disclaimer : For Research Use or Further Manufacturing Only.