

Mouse IL-28B, His Tag, E. coli

Catalog Number	LDG052PME
Package	5 µg / 20 µg / 100 µg / Customized package

For full product information, images and publications, please visit [our website](#).



Specifications

Species of Origin

Mouse

Affinity Tag

His Tag (C-term)

Purity

>98% as determined by SDS-PAGE analysis.

Activity

Measure by its ability to protect HepG2 cells infected with encephalomyocarditis (EMC) virus. The ED₅₀ for this effect is <20 ng/mL.

Form

Lyophilized

Expression System

Escherichia coli

Storage Buffer

Lyophilized from a 0.2 µm filtered solution of PBS, pH 7.4.

Molecular weight

The protein has a calculated MW of 20.56 kDa.
The protein migrates as 17-25 kDa under reducing condition (SDS-PAGE analysis).

Endotoxin Level

<0.1 EU per 1 µg of the protein by the LAL method.

Background

Tainan Headquarters

+886-6-2536677

bd@leadgene.com.tw

Innovation & Research Center

+886-2-27065528

CLD Center

+886-6-2536677

Background

Interleukin 28B (IL-28B) predicts a molecular mass of 19.7 kDa. IL-28 comes in two isoforms, IL-28A and IL-28B, and plays a role in immune defense against viruses, including the induction of an "antiviral state" by turning on Mx proteins, 2',5'-oligoadenylate synthetase as well as ISGF3G.

Uniprot ID

#Q8CGK6

Synonyms

Interferon lambda-3, IFN-lambda-3, Interleukin-28B, IL-28B

Sequence Note

Asp20-Val193

Instruction

Reconstitution

It is recommended to reconstitute the lyophilized protein in sterile H₂O to a concentration of 200 µg/mL and incubate the stock solution for at least 20 min to ensure sufficient re-dissolved.

Stability & Storage

This product is stable after storage at:

- -20°C for 12 months in lyophilized state from date of receipt.
- -20°C or -80°C for 2 weeks under sterile conditions after reconstitution.

Avoid repeated freeze/thaw cycles.

Shipping

The product is shipped with polar packs. Upon receipt, store it immediately at -20°C or lower for long term storage.

Image

Tainan Headquarters

+886-6-2536677

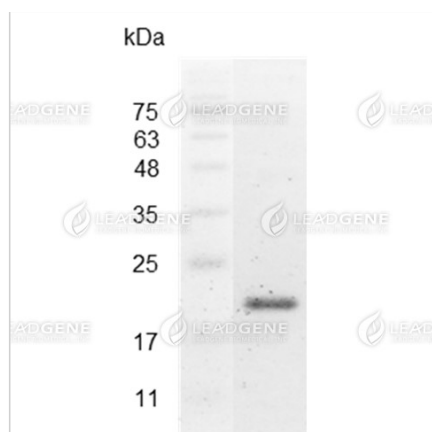
bd@leadgene.com.tw

Innovation & Research Center

+886-2-27065528

CLD Center

+886-6-2536677



SDS-PAGE analysis of recombinant mouse IL-28B.

Disclaimer : For Research Use or Further Manufacturing Only.