

## Human MIF, His Tag, E. coli

<b>Catalog Number</b>	LDG052PHE
<b>Package</b>	5 µg / 20 µg / 100 µg / Customized package

For full product information, images and publications, please visit [our website](#).



### Specifications

#### Species of Origin

Human

#### Affinity Tag

His Tag (C-term)

#### Purity

>98% as determined by SDS-PAGE analysis.

#### Endotoxin Level

<0.1 EU per 1 µg of the protein by the LAL method.

#### Expression System

Escherichia coli

#### Storage Buffer

Lyophilized from a 0.2 µm filtered solution of PBS, pH 8.0.

#### Molecular weight

The protein has a calculated MW of 13.28 kDa. The protein migrates as 10 kDa under reducing condition (SDS-PAGE analysis).

#### Form

Lyophilized

### Background

#### Background

Macrophage migration inhibitory factor (MIF) is a pleiotropic inflammatory mediator, predicts a molecular mass of 12.5 kDa. MIF binds to CD74, a type II transmembrane protein, inducing its phosphorylation and the recruitment of CD44, which then activates SRC family non-receptor tyrosine kinases, leading to ERK1/2 phosphorylation.

#### Synonyms

Macrophage migration inhibitory factor, Glycosylation-inhibiting factor, L-dopachrome isomerase, L-dopachrome tautomerase, Phenylpyruvate tautomerase

#### Tainan Headquarters

+886-6-2536677

bd@leadgene.com.tw

#### Innovation & Research Center

+886-2-27065528

#### CLD Center

+886-6-2536677

**Uniprot ID**

#P14174

**Sequence Note**

Met1-Ala115

**Instruction**
**Reconstitution**

It is recommended to reconstitute the lyophilized protein in sterile H<sub>2</sub>O to a concentration of 200 µg/mL and incubate the stock solution for at least 20 min to ensure sufficient re-dissolved.

**Stability & Storage**

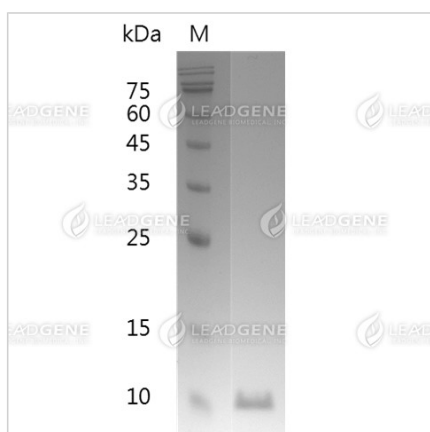
This product is stable after storage at:

- -20°C for 12 months in lyophilized state from date of receipt.
- -20°C or -80°C for 1 month under sterile conditions after reconstitution.

Avoid repeated freeze/thaw cycles.

**Shipping**

The product is shipped with polar packs. Upon receipt, store it immediately at -20°C or lower for long term storage.

**Image**


SDS-PAGE analysis of recombinant human MIF.

**Disclaimer** : For Research Use or Further Manufacturing Only.

**Tainan Headquarters**

+886-6-2536677

bd@leadgene.com.tw

**Innovation & Research Center**

+886-2-27065528

**CLD Center**

+886-6-2536677

**Tainan Headquarters**

☎ +886-6-2536677

✉ [bd@leadgene.com.tw](mailto:bd@leadgene.com.tw)

**Innovation & Research Center**

☎ +886-2-27065528

**CLD Center**

☎ +886-6-2536677