

Human TGF Beta 1, His Tag, E. coli

Catalog Number	LDG051PHE
Package	5 µg / 20 µg / 100 µg / Customized package

For full product information, images and publications, please visit [our website](#).



Specifications

Species of Origin

Human

Affinity Tag

His Tag (C-term)

Purity

>98% as determined by SDS-PAGE analysis.

Activity

Measure by its ability to inhibit the IL-4 dependent proliferation in TF-1 cells. The ED₅₀ for this effect is < 0.1 ng/mL. The specific activity of recombinant human TGF beat 1 is approximately > 1 x 10⁷ IU/mg.

Form

Lyophilized

Expression System

Escherichia coli

Storage Buffer

Lyophilized from a 0.2 µm filtered solution containing 20 mM sodium citrate and 0.2 M NaCl, pH 4.5.

Molecular weight

The protein has a calculated MW of 13.7 kDa. The protein migrates as 13 kDa under reducing condition (SDS-PAGE analysis).

Endotoxin Level

<0.1 EU per 1 µg of the protein by the LAL method.

Background

Tainan Headquarters

+886-6-2536677

bd@leadgene.com.tw

Innovation & Research Center

+886-2-27065528

CLD Center

+886-6-2536677

Background

The transforming Growth Factors beta (TGF beta) family of cytokines are ubiquitous, multifunctional, and essential to survival. They play the central roles in growth, development, inflammation, repair, and host immunity. The mammalian TGF beta isoforms (TGF beta 1, beta 2 and beta 3) are secreted as potential precursors and possess a variety of cell surface receptors and produces at least two mediate signal transductions.

Uniprot ID

#P01137

Synonyms

Transforming Growth Factors beta-1 proprotein

Sequence Note

Ala279-Ser390

Instruction

Reconstitution

It is recommended to reconstitute the lyophilized protein in sterile H₂O to a concentration not less than 200 µg/mL and incubate the stock solution for at least 20 min to ensure sufficient re-dissolved. In some experiments, it recommends to add 10 mM HCl when reconstitute lyophilized protein.

Stability & Storage

This product is stable after storage at:

- -20°C for 12 months in lyophilized state from date of receipt.
- -20°C or -80°C for 1 month under sterile conditions after reconstitution.

Avoid repeated freeze/thaw cycles.

Shipping

The product is shipped with polar packs. Upon receipt, store it immediately at -20°C or lower for long term storage.

Image

Tainan Headquarters

+886-6-2536677

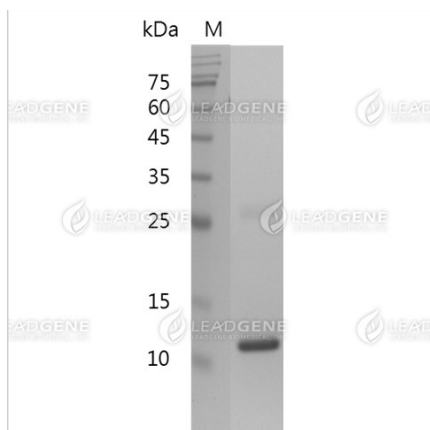
✉ bd@leadgene.com.tw

Innovation & Research Center

+886-2-27065528

CLD Center

+886-6-2536677



SDS-PAGE analysis of recombinant
human TGF beta 1.

Disclaimer : For Research Use or Further Manufacturing Only.