

Mouse IL-24, His Tag, E. coli

Catalog Number	LDG048PME
Package	5 µg / 20 µg / 100 µg / Customized package

For full product information, images and publications, please visit [our website](#).



Specifications

Species of Origin

Mouse

Affinity Tag

His Tag (C-term)

Purity

>95% as determined by SDS-PAGE analysis.

Activity

Measure by its ability to induce proliferation in BaF3 cells transfected with human IL-20 R alpha and human IL-20 R beta. The ED₅₀ for this effect is <0.3 ng/mL.

Form

Lyophilized

Expression System

Escherichia coli

Storage Buffer

Lyophilized from a 0.2 µm filtered solution of PBS, pH 7.4.

Molecular weight

The protein has a calculated MW of 18.94 kDa. The protein migrates about 17 kDa under reducing condition (SDS-PAGE analysis).

Endotoxin Level

<0.1 EU per 1 µg of the protein by the LAL method.

Background

Tainan Headquarters

+886-6-2536677

bd@leadgene.com.tw

Innovation & Research Center

+886-2-27065528

CLD Center

+886-6-2536677

Background

Interleukin 24 (IL-24) predicts a molecular mass of 18.2 kDa, is a cytokine belonging to the IL-10 family of cytokines that signals through IL-20R1 /IL-20R2 and IL-22R1 /IL-20R2. Its normal physiological role is connected with wound healing, protection against diseases caused by bacteria.

Uniprot ID

#NP_444325.3

Synonyms

Interleukin-24, IL-24, IL-4-induced secreted protein, Melanoma differentiation-associated gene 7 protein, MDA-7, Th2-specific cytokine FISP

Sequence Note

Gln27-Leu181

Instruction

Reconstitution

It is recommended to reconstitute the lyophilized protein in sterile H₂O to a concentration of 200 µg/mL and incubate the stock solution for at least 20 min to ensure sufficient re-dissolved.

Stability & Storage

This product is stable after storage at:

- -20°C for 12 months in lyophilized state from date of receipt.
- -20°C or -80°C for 1 month under sterile conditions after reconstitution.

Avoid repeated freeze/thaw cycles.

Shipping

The product is shipped with polar packs. Upon receipt, store it immediately at -20°C or lower for long term storage.

Image

Tainan Headquarters

+886-6-2536677

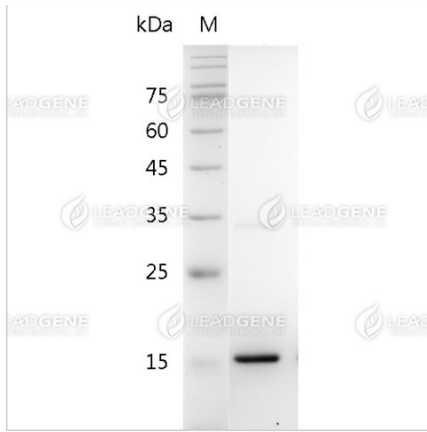
✉ bd@leadgene.com.tw

Innovation & Research Center

+886-2-27065528

CLD Center

+886-6-2536677



SDS-PAGE analysis of recombinant mouse IL-24.

Disclaimer : For Research Use or Further Manufacturing Only.