

Mouse IL-22, His Tag, E. coli

Catalog Number	LDG047PME
Package	5 µg / 20 µg / 100 µg / Customized package

For full product information, images and publications, please visit [our website](#).



Specifications

Species of Origin

Mouse

Affinity Tag

His Tag (C-term)

Purity

>98% as determined by SDS-PAGE analysis.

Activity

Measure by its ability to induce IL-10 secretion in COLO205 cells. The ED₅₀ for this effect is <0.3 ng/mL.

Form

Lyophilized

Expression System

Escherichia coli

Storage Buffer

Lyophilized from a 0.2 µm filtered solution of PBS, pH 7.4.

Molecular weight

The protein has a calculated MW of 17.58 kDa. The protein migrates about 17 kDa under reducing condition (SDS-PAGE analysis).

Endotoxin Level

<0.1 EU per 1 µg of the protein by the LAL method.

Background

Tainan Headquarters

+886-6-2536677

bd@leadgene.com.tw

Innovation & Research Center

+886-2-27065528

CLD Center

+886-6-2536677

Background

Interleukin 22 (IL-22) is an α -helical cytokine, predicts a molecular mass of 16.9 kDa. It is produced by T-helper (Th)-17 cells, $\gamma\delta$ T cells, NKT cells and newly described innate lymphoid cells (ILCs). Effects involve stimulation of cell survival, proliferation and synthesis of antimicrobials including S110, Reg3 β , Reg3 γ and defensins.

Uniprot ID

#Q9JJY9

Synonyms

Interleukin-22, IL-22, IL-10-related T-cell-derived-inducible factor, IL-TIF, IL-TIF alpha, Interleukin-22a, IL-22a

Sequence Note

Leu34-Val179

Instruction

Reconstitution

It is recommended to reconstitute the lyophilized protein in sterile H₂O to a concentration of 200 μ g/mL and incubate the stock solution for at least 20 min to ensure sufficient re-dissolved.

Stability & Storage

This product is stable after storage at:

- -20°C for 12 months in lyophilized state from date of receipt.
- -20°C or -80°C for 1 month under sterile conditions after reconstitution.

Avoid repeated freeze/thaw cycles.

Shipping

The product is shipped with polar packs. Upon receipt, store it immediately at -20°C or lower for long term storage.

Image

Tainan Headquarters

+886-6-2536677

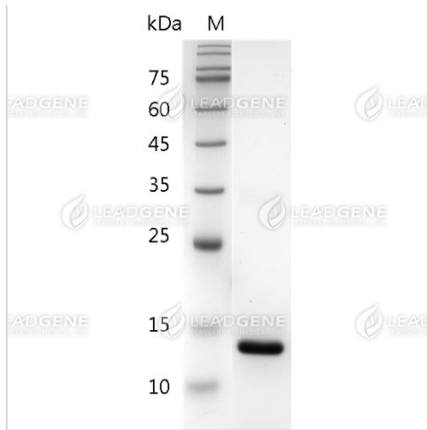
✉ bd@leadgene.com.tw

Innovation & Research Center

+886-2-27065528

CLD Center

+886-6-2536677



SDS-PAGE analysis of recombinant mouse IL-22.

Disclaimer : For Research Use or Further Manufacturing Only.