

## Human IFN Beta 1a, His Tag, E. coli

<b>Catalog Number</b>	LDG046PHE
<b>Package</b>	5 µg / 20 µg / 100 µg / Customized package

For full product information, images and publications, please visit [our website](#).



### Specifications

#### Species of Origin

Human

#### Affinity Tag

His Tag (C-term)

#### Purity

>98% as determined by SDS-PAGE analysis.

#### Activity

Measure by its ability to induce cytotoxicity in TF-1 cells. The ED50 for this effect is <0.1 ng/mL. The specific activity of recombinant human IFN beta 1a is approximately  $>1 \times 10^7$  IU/ mg.

#### Form

Lyophilized

#### Expression System

Escherichia coli

#### Storage Buffer

Lyophilized from a 0.2 µm filtered solution of PBS, pH 8.0.

#### Molecular weight

The protein has a calculated MW of 20.84 kDa. The protein migrates as 15 kDa under reducing condition (SDS-PAGE analysis).

#### Endotoxin Level

<0.1 EU per 1 µg of the protein by the LAL method.

### Background

#### Tainan Headquarters

+886-6-2536677

bd@leadgene.com.tw

#### Innovation & Research Center

+886-2-27065528

#### CLD Center

+886-6-2536677

### Background

Interferon-Beta 1a (IFN-beta 1a) is a leukocyte interferon, which is a variant of Interferon-beta. IFN-beta 1a is a 19 kDa protein containing 166 amino acid residues. It could bind the interferon receptors that activates the signal transduction of immune responses through the Jak/STAT pathway in leukocytes and lymphoblastoid cells.

### Uniprot ID

#P01574

### Synonyms

Interferon beta, IFN-beta, Fibroblast interferon

### Sequence Note

Met22-Asn187

## Instruction

### Reconstitution

It is recommended to reconstitute the lyophilized protein in sterile H<sub>2</sub>O to a concentration of 200 µg/mL and incubate the stock solution for at least 20 min to ensure sufficient re-dissolved.

### Stability & Storage

This product is stable after storage at:

- -20°C for 12 months in lyophilized state from date of receipt.
- -20°C or -80°C for 1 month under sterile conditions after reconstitution.

Avoid repeated freeze/thaw cycles.

### Shipping

The product is shipped with polar packs. Upon receipt, store it immediately at -20°C or lower for long term storage.

## Image

### Tainan Headquarters

+886-6-2536677

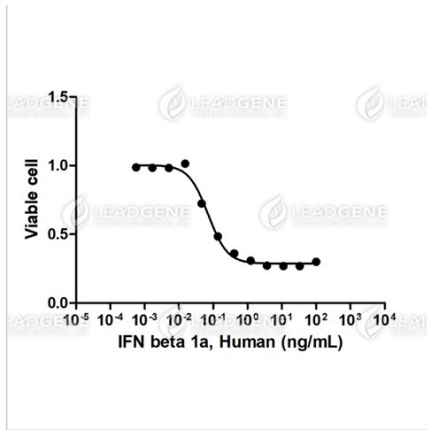
bd@leadgene.com.tw

### Innovation & Research Center

+886-2-27065528

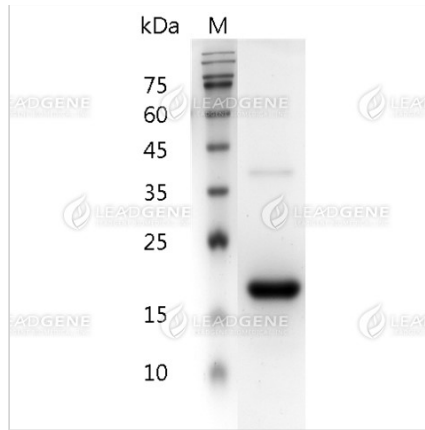
### CLD Center

+886-6-2536677



Measure by its ability to induce cytotoxicity in TF-1 cells. The ED50 for this effect is <0.1 ng/mL. The specific activity of recombinant human IFN beta 1a is approximately >1 x10<sup>7</sup> IU/mg.

Activity analysis of recombinant Human IFN Beta 1a, His Tag, E. coli.



SDS-PAGE analysis of recombinant human IFN Beta 1a.

**Disclaimer :** For Research Use or Further Manufacturing Only.