

## Human IFN Alpha 1a, His Tag, E. coli

<b>Catalog Number</b>	LDG045PHE
<b>Package</b>	5 µg / 20 µg / 100 µg / Customized package

For full product information, images and publications, please visit [our website](#).



### Specifications

#### Species of Origin

Human

#### Affinity Tag

His Tag (N-term)

#### Purity

>95% as determined by SDS-PAGE analysis.

#### Activity

Measure by its ability to inhibit IL-8 secretion in human PBMCs in the presence of LPS. The ED<sub>50</sub> for this effect is <1.12 µg/mL.

#### Form

Lyophilized

#### Expression System

Escherichia coli

#### Storage Buffer

Lyophilized from a 0.2 µm filtered solution of 500 mM NaCl PBS, pH 7.4.

#### Molecular weight

The protein has a calculated MW of 20.19 kDa. The protein migrates as 19 kDa under reducing condition (SDS-PAGE analysis).

#### Endotoxin Level

<0.1 EU per 1 µg of the protein by the LAL method.

### Background

#### Tainan Headquarters

+886-6-2536677

bd@leadgene.com.tw

#### Innovation & Research Center

+886-2-27065528

#### CLD Center

+886-6-2536677

### Background

Interferon-alpha 1a (IFN-alpha 1a) is a leukocyte interferon, which is a variant of Interferon-alpha. IFN-alpha 1a is a 19.5kDa protein containing 167 amino acid residues. It could bind the interferon receptors that activates the signal transduction of immune responses through the Jak/STAT pathway in leukocytes and lymphoblastoid cells.

### Uniprot ID

#P01562

### Synonyms

Interferon alpha-1 / 13, IFN-alpha-1 / 13, Interferon alpha-D, LeIF D

### Sequence Note

Cys24-Glu189

## Instruction

### Reconstitution

It is recommended to reconstitute the lyophilized protein in sterile H<sub>2</sub>O to a concentration of 200 µg/mL and incubate the stock solution for at least 20 min to ensure sufficient re-dissolved.

### Stability & Storage

This product is stable after storage at:

- -20°C for 12 months in lyophilized state from date of receipt.
- -20°C or -80°C for 1 month under sterile conditions after reconstitution.

Avoid repeated freeze/thaw cycles.

### Shipping

The product is shipped with polar packs. Upon receipt, store it immediately at -20°C or lower for long term storage.

## Image

### Tainan Headquarters

+886-6-2536677

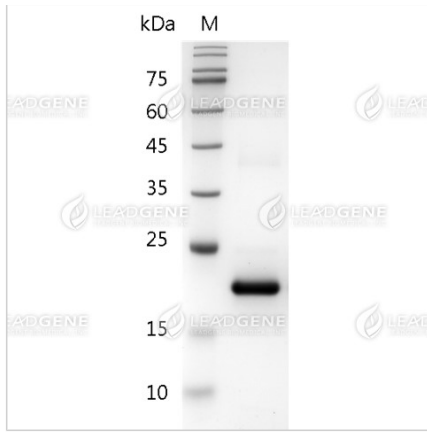
✉ [bd@leadgene.com.tw](mailto:bd@leadgene.com.tw)

### Innovation & Research Center

+886-2-27065528

### CLD Center

+886-6-2536677



SDS-PAGE analysis of recombinant human IFN Alpha 1a.

**Disclaimer :** For Research Use or Further Manufacturing Only.