

## Mouse IL-19, His Tag, E. coli

<b>Catalog Number</b>	LDG044PME
<b>Package</b>	5 µg / 20 µg / 100 µg / Customized package

For full product information, images and publications, please visit [our website](#).



### Specifications

#### Species of Origin

Mouse

#### Affinity Tag

His Tag (C-term)

#### Purity

>98% as determined by SDS-PAGE analysis.

#### Activity

Measure by its ability to induce proliferation in BaF3 cells transfected with human IL-20 R alpha and human IL-20 R beta. The ED<sub>50</sub> for this effect is <0.6 ng/mL.

#### Form

Lyophilized

#### Expression System

Escherichia coli

#### Storage Buffer

Lyophilized from a 0.2 µm filtered solution of PBS, pH 7.4.

#### Molecular weight

The protein has a calculated MW of 18.54 kDa. The protein migrates as 17-25 kDa under reducing condition (SDS-PAGE analysis).

#### Endotoxin Level

<0.1 EU per 1 µg of the protein by the LAL method.

### Background

#### Tainan Headquarters

+886-6-2536677

bd@leadgene.com.tw

#### Innovation & Research Center

+886-2-27065528

#### CLD Center

+886-6-2536677

### Background

Interleukin 19 (IL-19) predicts a molecular mass of 35.8 kDa, is a type of anti-inflammatory cytokine. It promotes the Th2 T-cell response which supports an anti-inflammatory lymphocyte phenotype, dampens the Th1 T-cell response and IFN $\gamma$  secretion, increases IL-10 expression in peripheral blood mononuclear cells, and inhibits the production of IgG from B cells.

### Uniprot ID

#Q8CJ70

### Synonyms

Interleukin-19, IL-19

### Sequence Note

Leu25-Ala176

## Instruction

### Reconstitution

It is recommended to reconstitute the lyophilized protein in sterile H<sub>2</sub>O to a concentration of 200  $\mu$ g/mL and incubate the stock solution for at least 20 min to ensure sufficient re-dissolved.

### Stability & Storage

This product is stable after storage at:

- -20°C for 12 months in lyophilized state from date of receipt.
- -20°C or -80°C for 1 month under sterile conditions after reconstitution.

Avoid repeated freeze/thaw cycles.

### Shipping

The product is shipped with polar packs. Upon receipt, store it immediately at -20°C or lower for long term storage.

## Image

### Tainan Headquarters

+886-6-2536677

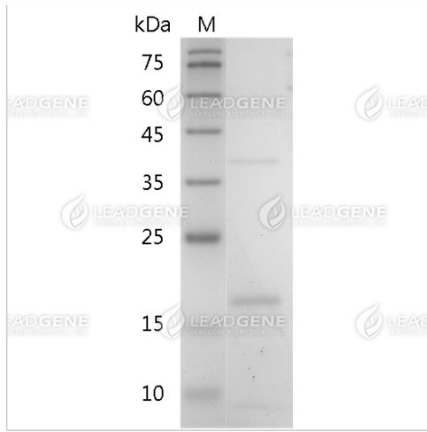
✉ [bd@leadgene.com.tw](mailto:bd@leadgene.com.tw)

### Innovation & Research Center

+886-2-27065528

### CLD Center

+886-6-2536677



SDS-PAGE analysis of recombinant mouse IL-19.

**Disclaimer :** For Research Use or Further Manufacturing Only.