

Human IL-38, His Tag, E. coli

Catalog Number	LDG043PHE
Package	5 µg / 20 µg / 100 µg / Customized package

For full product information, images and publications, please visit [our website](#).



Specifications

Species of Origin

Human

Affinity Tag

His Tag (C-term)

Purity

>98% as determined by SDS-PAGE analysis.

Endotoxin Level

<0.1 EU per 1 µg of the protein by the LAL method.

Expression System

Escherichia coli

Storage Buffer

Lyophilized from a 0.2 µm filtered solution of PBS, pH 7.4.

Molecular weight

The protein has a calculated MW of 17.78 kDa. The protein migrates as 21 kDa under reducing condition (SDS-PAGE analysis).

Form

Lyophilized

Background

Background

Interleukin-38 (IL-38) is a member of the interleukin-1 cytokine family. IL-38 is a ligand for soluble IL-1 receptor type I (IL-1RI). IL-38 could block the IL-36 pathway by inhibiting the IL-36 cytokine binding to their receptor. This process shows that IL-38 has anti-inflammatory properties. IL-38 is expressed in the immune organs, specifically in the skin and the tonsil, indispensable for B cell proliferation.

Synonyms

Family of interleukin 1-theta, FIL1 theta, Interleukin-1 HY2, IL-1HY2, Interleukin-1 theta, IL-1 theta, Interleukin-38, IL-38, Interleukin-1 family member 10, IL-1F10

Tainan Headquarters

+886-6-2536677

bd@leadgene.com.tw

Innovation & Research Center

+886-2-27065528

CLD Center

+886-6-2536677

Uniprot ID

#Q8WWZ1

Sequence Note

Met1-Trp152

Instruction
Reconstitution

It is recommended to reconstitute the lyophilized protein in sterile H₂O to a concentration of 200 µg/mL and incubate the stock solution for at least 20 min to ensure sufficient re-dissolved.

Stability & Storage

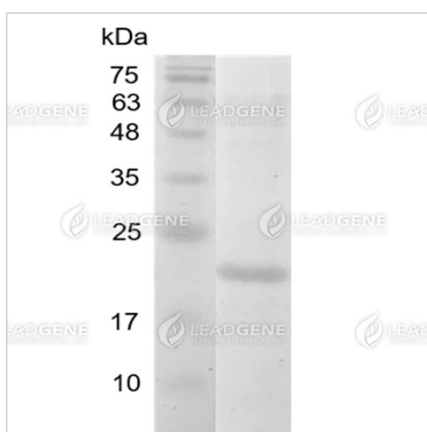
This product is stable after storage at:

- -20°C for 12 months in lyophilized state from date of receipt.
- -20°C or -80°C for 1 month under sterile conditions after reconstitution.

Avoid repeated freeze/thaw cycles.


Shipping

The product is shipped with polar packs. Upon receipt, store it immediately at -20°C or lower for long term storage.


Image



SDS-PAGE analysis of recombinant human IL-38.

Disclaimer : For Research Use or Further Manufacturing Only.

Tainan Headquarters
 +886-6-2536677

 bd@leadgene.com.tw

Innovation & Research Center
 +886-2-27065528

CLD Center
 +886-6-2536677

Tainan Headquarters

☎ +886-6-2536677

✉ bd@leadgene.com.tw

Innovation & Research Center

☎ +886-2-27065528

CLD Center

☎ +886-6-2536677