

Human IL-36 Gamma, His Tag, E. coli

Catalog Number	LDG041PHE
Package	5 µg / 20 µg / 100 µg / Customized package

For full product information, images and publications, please visit [our website](#).



Specifications

Species of Origin

Human

Affinity Tag

His Tag (C-term)

Purity

>98% as determined by SDS-PAGE analysis.

Activity

Measure by its ability to induce IL-8 secretion in A431 cells. The ED₅₀ for this effect is <5 ng/mL.

Form

Lyophilized

Expression System

Escherichia coli

Storage Buffer

Lyophilized from a 0.2 µm filtered solution of PBS, pH 8.0.

Molecular weight

The protein has a calculated MW of 17.98 kDa. The protein migrates as 19 kDa under reducing condition (SDS-PAGE analysis).

Endotoxin Level

<0.1 EU per 1 µg of the protein by the LAL method.

Background

Tainan Headquarters

+886-6-2536677

bd@leadgene.com.tw

Innovation & Research Center

+886-2-27065528

CLD Center

+886-6-2536677

Background

Interleukin-36 gamma (IL-36 γ) consists of 134 amino acids. IL-36 γ is a member of the interleukin-1 cytokine family. It plays a significant role in immune responses, particularly in inflammatory reactions, which are essential for binding with interleukin-1 receptor and serves as receptor agonists, enabling cytokine activity and generating pro-inflammatory.

Uniprot ID

#Q9NZH8

Synonyms

Interleukin-36 gamma, IL-1-related protein 2, IL-1RP2, Interleukin-1 epsilon, IL-1 epsilon, Interleukin-1 family member 9, IL-1F9, Interleukin-1 homolog 1, IL-1H1

Sequence Note

Ser18-Asp169

Instruction

Reconstitution

It is recommended to reconstitute the lyophilized protein in sterile H₂O to a concentration of 200 μ g/mL and incubate the stock solution for at least 20 min to ensure sufficient re-dissolved.

Stability & Storage

This product is stable after storage at:

- -20°C for 12 months in lyophilized state from date of receipt.
- -20°C or -80°C for 1 month under sterile conditions after reconstitution.

Avoid repeated freeze/thaw cycles.

Shipping

The product is shipped with polar packs. Upon receipt, store it immediately at -20°C or lower for long term storage.

Image

Tainan Headquarters

+886-6-2536677

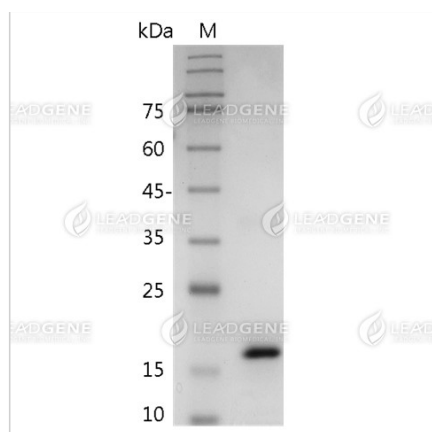
bd@leadgene.com.tw

Innovation & Research Center

+886-2-27065528

CLD Center

+886-6-2536677



SDS-PAGE analysis of recombinant human IL-36 Gamma.

Disclaimer : For Research Use or Further Manufacturing Only.