

## Mouse IL-17B, His Tag, E. coli

<b>Catalog Number</b>	LDG040PME
<b>Package</b>	5 µg / 20 µg / 100 µg / Customized package

For full product information, images and publications, please visit [our website](#).



### Specifications

#### Species of Origin

Mouse

#### Affinity Tag

His Tag (C-term)

#### Purity

>98% as determined by SDS-PAGE analysis.

#### Activity

Measure by its ability to induce IL-8 secretion in HepG2 cells. The ED<sub>50</sub> for this effect is <1.5 ng/mL.

#### Form

Lyophilized

#### Expression System

Escherichia coli

#### Storage Buffer

Lyophilized from a 0.2 µm filtered solution containing 20 mM sodium citrate and 0.2 M NaCl, pH 4.5.

#### Molecular weight

The protein has a calculated MW of 18.99 kDa. The protein migrates as 17-25 kDa under reducing condition (SDS-PAGE analysis).

#### Endotoxin Level

<0.1 EU per 1 µg of the protein by the LAL method.

### Background

#### Tainan Headquarters

+886-6-2536677

bd@leadgene.com.tw

#### Innovation & Research Center

+886-2-27065528

#### CLD Center

+886-6-2536677

### Background

Interleukin 17B (IL-17B) predicts a molecular mass of 20.4 kDa, is expressed in several peripheral tissues and immune tissues. In contrast to the high level of IL-6 secretion stimulated by IL-17A, IL-17B failed to induce IL-6 secretion in fibroblasts; however, it significantly enhanced the TNF- $\alpha$ -induced production of G-CSF and IL-6 in the fibroblasts.

### Uniprot ID

#Q9QXT6

### Synonyms

Interleukin-17B, IL-17B, Cytokine CX1, Cytokine-like protein ZCYTO7, Neuronal interleukin-17-related factor

### Sequence Note

His21-Phe180

## Instruction

### Reconstitution

It is recommended to reconstitute the lyophilized protein in sterile H<sub>2</sub>O to a concentration not less than 200  $\mu$ g/mL and incubate the stock solution for at least 20 min to ensure sufficient re-dissolved.

### Stability & Storage

This product is stable after storage at:

- -20°C for 12 months in lyophilized state from date of receipt.
- -20°C or -80°C for 1 month under sterile conditions after reconstitution.

Avoid repeated freeze/thaw cycles.

### Shipping

The product is shipped with polar packs. Upon receipt, store it immediately at -20°C or lower for long term storage.

## Image

### Tainan Headquarters

+886-6-2536677

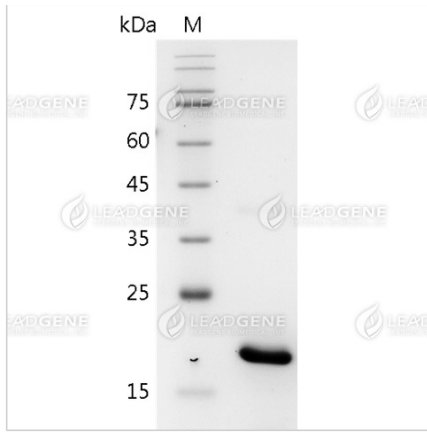
✉ [bd@leadgene.com.tw](mailto:bd@leadgene.com.tw)

### Innovation & Research Center

+886-2-27065528

### CLD Center

+886-6-2536677



SDS-PAGE analysis of recombinant mouse IL-17B.

**Disclaimer :** For Research Use or Further Manufacturing Only.