

## Human IL-36 Beta, His Tag, E. coli

<b>Catalog Number</b>	LDG040PHE
<b>Package</b>	5 µg / 20 µg / 100 µg / Customized package

For full product information, images and publications, please visit [our website](#).



### Specifications

#### Species of Origin

Human

#### Affinity Tag

His Tag (C-term)

#### Purity

>98% as determined by SDS-PAGE analysis.

#### Activity

Measure by its ability to induce IL-8 secretion in human PBMCs. The ED<sub>50</sub> for this effect is <0.2 ng/mL.

#### Form

Lyophilized

#### Expression System

Escherichia coli

#### Storage Buffer

Lyophilized from a 0.2 µm filtered solution of PBS, pH 7.4.

#### Molecular weight

The protein has a calculated MW of 18.17 kDa. The protein migrates as 18 kDa under reducing condition (SDS-PAGE analysis).

#### Endotoxin Level

<0.1 EU per 1 µg of the protein by the LAL method.

### Background

#### Tainan Headquarters

+886-6-2536677

bd@leadgene.com.tw

#### Innovation & Research Center

+886-2-27065528

#### CLD Center

+886-6-2536677

### Background

Interleukin-36 beta (IL-36 $\beta$ ) is an 18 kDa cytokine with 154 amino acid residues. IL-36 $\beta$ , the ligand of IL-36R, is expressed in keratinocytes and plays a significant role in inflammatory responses. IL-36 $\beta$  regulates biological functions like the differentiation of T cells. Moreover, IL-36 $\beta$  recruits neutrophils via inducing the expression of cytokines and chemokines, such as IL-17C, granulocyte colony-stimulating factor (G-CSF), IL-8, CXCL-1, and tumor necrosis factor (TNF).

### Uniprot ID

#NP\_775270.1

### Synonyms

Interleukin-36 beta, FIL1 eta, Interleukin-1 eta, IL-1 eta, Interleukin-1 family member 8, IL-1F8, Interleukin-1 homolog 2, IL-1H2

### Sequence Note

Arg5-Glu157

## Instruction

### Reconstitution

It is recommended to reconstitute the lyophilized protein in sterile H<sub>2</sub>O to a concentration of 200  $\mu$ g/mL and incubate the stock solution for at least 20 min to ensure sufficient re-dissolved.

### Stability & Storage

This product is stable after storage at:

- -20°C for 12 months in lyophilized state from date of receipt.
- -20°C or -80°C for 1 month under sterile conditions after reconstitution.

Avoid repeated freeze/thaw cycles.

### Shipping

The product is shipped with polar packs. Upon receipt, store it immediately at -20°C or lower for long term storage.

## Image

### Tainan Headquarters

+886-6-2536677

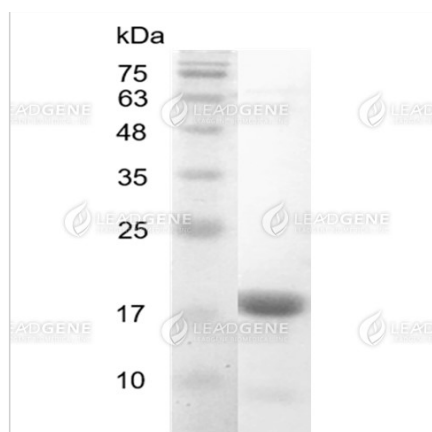
✉ [bd@leadgene.com.tw](mailto:bd@leadgene.com.tw)

### Innovation & Research Center

+886-2-27065528

### CLD Center

+886-6-2536677



SDS-PAGE analysis of recombinant  
human IL-36 Beta.

**Disclaimer :** For Research Use or Further Manufacturing Only.