

## Human IL-32 Alpha, His Tag, E. coli

<b>Catalog Number</b>	LDG036PHE
<b>Package</b>	5 µg / 20 µg / 100 µg / Customized package

For full product information, images and publications, please visit [our website](#).



### Specifications

#### Species of Origin

Human

#### Affinity Tag

His Tag (C-term)

#### Purity

>98% as determined by SDS-PAGE analysis.

#### Activity

Measure by its ability to induce TNF alpha secretion in RAW264.7 cells. The ED<sub>50</sub> for this effect is <10 µg/mL.

#### Form

Lyophilized

#### Expression System

Escherichia coli

#### Storage Buffer

Lyophilized from a 0.2 µm filtered solution of PBS, pH 8.0.

#### Molecular weight

The protein has a calculated MW of 15.72 kDa. The protein migrates as 18 kDa under reducing condition (SDS-PAGE analysis).

#### Endotoxin Level

<0.1 EU per 1 µg of the protein by the LAL method.

### Background

#### Tainan Headquarters

+886-6-2536677

bd@leadgene.com.tw

#### Innovation & Research Center

+886-2-27065528

#### CLD Center

+886-6-2536677

### Background

Interleukin 32 alpha (IL-32 $\alpha$ ) is an 18 kDa cytokine with 131 amino acid residues and one of the IL-2 splice variants. IL-32 $\alpha$  is primarily secreted from inflammatory cells, such as NK cells, T-cells, peripheral blood mononuclear cells (PBMCs), and monocytes. IL-32 alpha is a proinflammatory cytokine regulating IL-6 by interaction with protein kinase C(PKC). It also interacts with paxillin, integrin, and focal adhesion kinase 1 (FAK 1).

### Uniprot ID

P24001-4

### Synonyms

Natural killer cells protein 4, Tumor necrosis factor alpha-inducing factor, Interleukin-31

### Sequence Note

Met1-Lys131

## Instruction

### Reconstitution

It is recommended to reconstitute the lyophilized protein in sterile H<sub>2</sub>O to a concentration of 200  $\mu$ g/mL and incubate the stock solution for at least 20 min to ensure sufficient re-dissolved.

### Stability & Storage

This product is stable after storage at:

- -20°C for 12 months in lyophilized state from date of receipt.
- -20°C or -80°C for 1 month under sterile conditions after reconstitution.

Avoid repeated freeze/thaw cycles.

### Shipping

The product is shipped with polar packs. Upon receipt, store it immediately at -20°C or lower for long term storage.

## Image

### Tainan Headquarters

+886-6-2536677

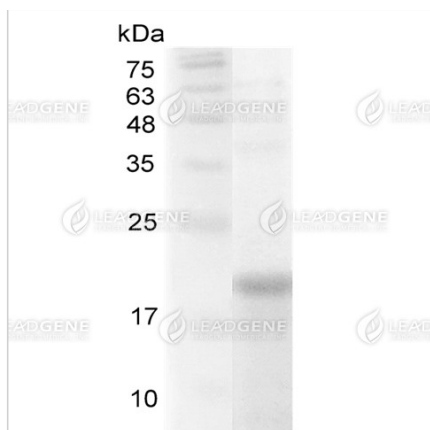
✉ [bd@leadgene.com.tw](mailto:bd@leadgene.com.tw)

### Innovation & Research Center

+886-2-27065528

### CLD Center

+886-6-2536677



SDS-PAGE analysis of recombinant human IL-32 Alpha.

**Disclaimer :** For Research Use or Further Manufacturing Only.