

Human IL-31, His Tag, E. coli

Catalog Number	LDG035PHE
Package	5 µg / 20 µg / 100 µg / Customized package

For full product information, images and publications, please visit [our website](#).



Specifications

Species of Origin

Human

Expression System

Escherichia coli

Affinity Tag

His Tag (C-term)

Storage Buffer

Lyophilized from a 0.2 µm filtered solution of PBS, pH 8.0.

Purity

>98% as determined by SDS-PAGE analysis.

Molecular weight

The protein has a calculated MW of 16.78 kDa. The protein migrates as 18 kDa under reducing condition (SDS-PAGE analysis).

Activity

Measured by its ability to induce A549 cells proliferation. The ED₅₀ for this effect is < 40 ng/mL.

Endotoxin Level

<0.1 EU per 1 µg of the protein by the LAL method.

Form

Lyophilized

Background

Tainan Headquarters

+886-6-2536677

bd@leadgene.com.tw

Innovation & Research Center

+886-2-27065528

CLD Center

+886-6-2536677

Background

Interleukin 31 (IL-31) is an 18 kDa cytokine with 142 amino acid residues. IL-31 is mainly secreted from activated CD4+ T cells and binds to a receptor called IL-31RA. Upon binding to 31RA, IL-31 activates several signal pathways like MAPK, PI3K/AKT, and Jak/STAT pathways. It is critical in regulating many biological functions, such as cell proliferation, hematopoiesis, induction of cytokines, inflammation, and immune response.

Uniprot ID

#Q6EBC2

Synonyms

Interleukin-31

Sequence Note

Ser24-Thr164

Instruction

Reconstitution

It is recommended to reconstitute the lyophilized protein in sterile H₂O to a concentration of 200 µg/mL and incubate the stock solution for at least 20 min to ensure sufficient re-dissolved.

Stability & Storage

This product is stable after storage at:

- -20°C for 12 months in lyophilized state from date of receipt.
- -20°C or -80°C for 1 month under sterile conditions after reconstitution.

Avoid repeated freeze/thaw cycles.

Shipping

The product is shipped with polar packs. Upon receipt, store it immediately at -20°C or lower for long term storage.

Image

Tainan Headquarters

+886-6-2536677

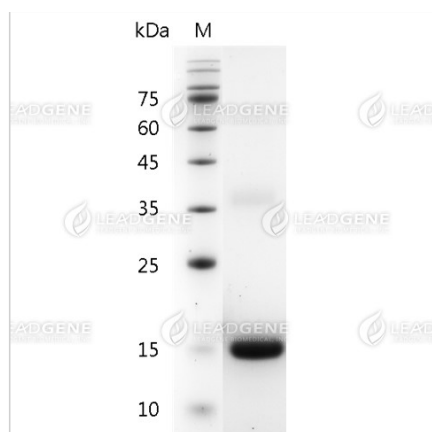
✉ bd@leadgene.com.tw

Innovation & Research Center

+886-2-27065528

CLD Center

+886-6-2536677



SDS-PAGE analysis of recombinant human IL-31.

Disclaimer : For Research Use or Further Manufacturing Only.