

Human CD1d, His Tag, CHO

Catalog Number	LDG033PHM
Package	5 µg / 20 µg / 100 µg / Customized package

For full product information, images and publications, please visit [our website](#).



Specifications

Species of Origin

Human

Expression System

CHO

Affinity Tag

His Tag (C-term)

Storage Buffer

Lyophilized from a 0.2 µm filtered solution of PBS, pH 7.4.

Purity

>95% as determined by SDS-PAGE analysis.

Molecular weight

The protein has a calculated MW of 32.72 kDa.
The protein migrates as 40-50 kDa under reducing condition (SDS-PAGE analysis).

Endotoxin Level

<0.1 EU per 1 µg of the protein by the LAL method.

Mycoplasma

Not detected

Form

Lyophilized

Background

Tainan Headquarters

+886-6-2536677

bd@leadgene.com.tw

Innovation & Research Center

+886-2-27065528

CLD Center

+886-6-2536677

Background

CD1d protein is a non-classical major histocompatibility complex (MHC) class I-like molecule primarily expressed on antigen-presenting cells, such as dendritic cells and B cells. It presents lipid antigens, including glycolipids and lipopeptides, to natural killer T (NKT) cells. CD1d-NKT cell interaction activates NKT cells, leading to rapid cytokine production and modulation of immune responses. CD1d plays a crucial role in regulating innate and adaptive immunity, autoimmune diseases, and tumor immunosurveillance. Targeting CD1d-NKT cell axis holds promise for therapeutic interventions in cancer, infectious diseases, and autoimmune disorders.

Uniprot ID

P15813

Synonyms

Antigen-presenting glycoprotein CD1d, R3G1

Sequence Note

Met1-Ser301

Instruction

Reconstitution

It is recommended to reconstitute the lyophilized protein in 4 mM HCl to a concentration of 200 µg/mL and incubate the stock solution for at least 20 min to ensure sufficient re-dissolved.

Stability & Storage

This product is stable after storage at:

- -20°C for 12 months in lyophilized state from date of receipt.
- -20°C or -80°C for 1 month under sterile conditions after reconstitution.

Avoid repeated freeze/thaw cycles.

Shipping

The product is shipped with polar packs. Upon receipt, store it immediately at -20°C or lower for long term storage.

Image

Tainan Headquarters

+886-6-2536677

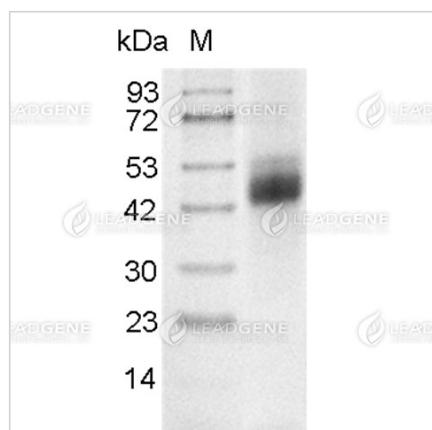
✉ bd@leadgene.com.tw

Innovation & Research Center

+886-2-27065528

CLD Center

+886-6-2536677



SDS-PAGE analysis of recombinant human CD1d.

Disclaimer : For Research Use or Further Manufacturing Only.