

Human CAM6, His Tag, CHO

Catalog Number	LDG032PHM
Package	5 µg / 20 µg / 100 µg / Customized package

For full product information, images and publications, please visit [our website](#).



Specifications

Species of Origin

Human

Expression System

CHO

Affinity Tag

His Tag (C-term)

Storage Buffer

Lyophilized from a 0.2 µm filtered solution of PBS, pH 7.4.

Purity

>95% as determined by SDS-PAGE analysis.

Molecular weight

The protein has a calculated MW of 32.06 kDa. The protein migrates as 40-55 kDa under reducing condition (SDS-PAGE analysis).

Endotoxin Level

<0.1 EU per 1 µg of the protein by the LAL method.

Mycoplasma

Not detected

Form

Lyophilized

Background

Tainan Headquarters

+886-6-2536677

bd@leadgene.com.tw

Innovation & Research Center

+886-2-27065528

CLD Center

+886-6-2536677

Background

CAM6 (Cell Adhesion Molecule 6) protein, also known as Carcinoembryonic Antigen-related Cell Adhesion Molecule 6 (CEACAM6), is a transmembrane glycoprotein involved in cell-cell adhesion and signaling. It is expressed in various epithelial tissues and is overexpressed in certain cancers, including colorectal, pancreatic, and lung cancer. CAM6 promotes cancer cell proliferation, migration, and invasion, contributing to tumor progression and metastasis. Additionally, CAM6 can serve as a biomarker for cancer diagnosis and prognosis. Understanding CAM6's roles in cancer biology is crucial for developing targeted therapies and diagnostic tools for cancer detection and treatment.

Uniprot ID

P40199

Synonyms

Carcinoembryonic antigen-related cell adhesion molecule 6, Non-specific crossreacting antigen, Normal cross-reacting antigen, CD66c

Sequence Note

Met1-Gly320

Instruction

Reconstitution

It is recommended to reconstitute the lyophilized protein in 4 mM HCl to a concentration of 200 µg/mL and incubate the stock solution for at least 20 min to ensure sufficient re-dissolved.

Stability & Storage

This product is stable after storage at:

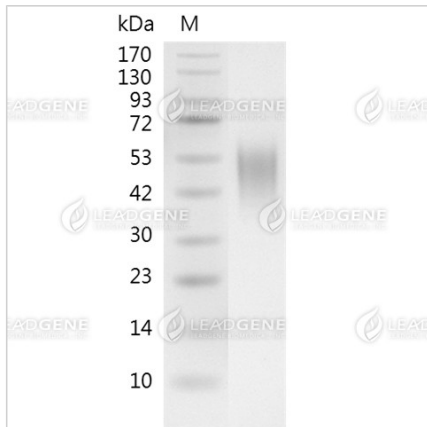
- -20°C for 12 months in lyophilized state from date of receipt.
- -20°C or -80°C for 1 month under sterile conditions after reconstitution.

Avoid repeated freeze/thaw cycles.

Shipping

The product is shipped with polar packs. Upon receipt, store it immediately at -20°C or lower for long term storage.

Image



SDS-PAGE analysis of recombinant human CAM6.

Disclaimer : For Research Use or Further Manufacturing Only.