

PRRSV Nucleocapsid Protein, His Tag, E. coli

Catalog Number	LDG031PVE
Package	100 µg / Customized package

For full product information, images and publications, please visit [our website](#).



Specifications

Species of Origin

Porcine Reproductive and Respiratory Syndrome Virus (PRRSV)

Expression System

Escherichia coli

Affinity Tag

His Tag (N-term)

Storage Buffer

Lyophilized from a 0.2 µm filtered solution of PBS, pH 7.4.

Purity

>90% as determined by SDS-PAGE analysis.

Molecular weight

The protein has a calculated MW of 14.61 kDa. The protein migrates as 11-14 kDa under reducing condition (SDS-PAGE analysis).

Endotoxin Level

<1 EU per 1 µg of the protein by the LAL method.

Form

Lyophilized

Background

Background

The PRRS virus (PRRSV) is an enveloped, single-stranded positive-sense RNA virus, responsible for porcine reproductive and respiratory syndrome (PRRS). The nucleocapsid (N) protein of PRRSV has a vital role in suppressing host innate immunity during PRRSV infection.

Synonyms

Nucleoprotein, Protein N

Uniprot ID

Q04558

Sequence Note

Met1 - Ser128

Instruction
Reconstitution

It is recommended to reconstitute the lyophilized protein in sterile H₂O to a concentration of 200 µg/mL and incubate the stock solution for at least 20 min to ensure sufficient re-dissolved.

Stability & Storage

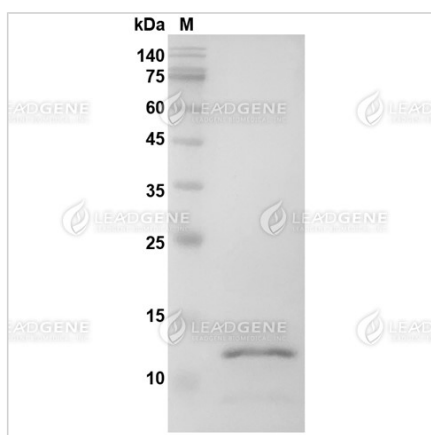
This product is stable after storage at:

- -20°C for 12 months in lyophilized state from date of receipt.
- -20°C or -80°C for 1 month under sterile conditions after reconstitution.

Avoid repeated freeze/thaw cycles.

Shipping

The product is shipped with polar packs. Upon receipt, store it immediately at -20°C or lower for long term storage.

Image


SDS-PAGE analysis of PRRSV nucleocapsid protein.

Disclaimer : For Research Use or Further Manufacturing Only.

Tainan Headquarters

+886-6-2536677

bd@leadgene.com.tw

Innovation & Research Center

+886-2-27065528

CLD Center

+886-6-2536677

Tainan Headquarters

+886-6-2536677

bd@leadgene.com.tw

Innovation & Research Center

+886-2-27065528

CLD Center

+886-6-2536677