

Human Ang-2, His Tag, CHO

Catalog Number	LDG031PHM
Package	5 µg / 20 µg / 100 µg / Customized package

For full product information, images and publications, please visit [our website](#).



Specifications

Species of Origin

Human

Expression System

CHO

Affinity Tag

His Tag (C-term)

Storage Buffer

Lyophilized from a 0.2 µm filtered solution of PBS, pH 7.4.

Purity

>90% as determined by SDS-PAGE analysis.

Molecular weight

The protein has a calculated MW of 55.73 kDa. The protein migrates as 30-72 kDa under reducing condition (SDS-PAGE analysis).

Endotoxin Level

<0.1 EU per 1 µg of the protein by the LAL method.

Mycoplasma

Not detected

Form

Lyophilized

Background

Tainan Headquarters

+886-6-2536677

bd@leadgene.com.tw

Innovation & Research Center

+886-2-27065528

CLD Center

+886-6-2536677

Background

Angiopoietin-2 (Ang-2) protein is a ligand for the Tie-2 receptor, crucial for angiogenesis and vascular remodeling. Unlike Angiopoietin-1 (Ang-1), Ang-2 destabilizes blood vessels, promoting endothelial cell apoptosis and vascular leakage. Ang-2 expression is upregulated during inflammation and vascular remodeling, contributing to pathological angiogenesis in diseases like cancer and retinopathy. Targeting Ang-2 signaling shows promise in inhibiting tumor growth and metastasis. However, its precise roles in angiogenesis and disease progression are still under investigation. Understanding Ang-2's functions provides insights into vascular biology and potential therapeutic strategies for angiogenesis-related disorders.

Uniprot ID

O15123

Synonyms

Angiopoietin-2

Sequence Note

Met1-Phe496

Instruction

Reconstitution

It is recommended to reconstitute the lyophilized protein in 4 mM HCl to a concentration of 200 µg/mL and incubate the stock solution for at least 20 min to ensure sufficient re-dissolved.

Stability & Storage

This product is stable after storage at:

- -20°C for 12 months in lyophilized state from date of receipt.
- -20°C or -80°C for 1 month under sterile conditions after reconstitution.

Avoid repeated freeze/thaw cycles.

Shipping

The product is shipped with polar packs. Upon receipt, store it immediately at -20°C or lower for long term storage.

Tainan Headquarters

+886-6-2536677

✉ bd@leadgene.com.tw

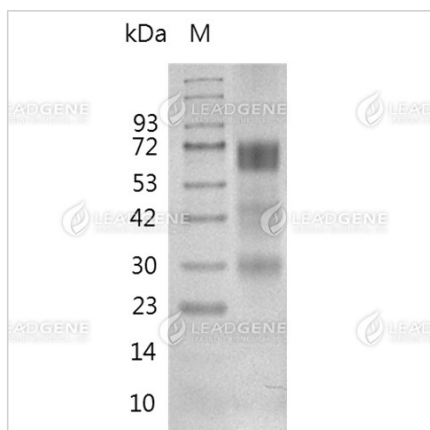
Innovation & Research Center

+886-2-27065528

CLD Center

+886-6-2536677

Image



SDS-PAGE analysis of recombinant human Ang-2.

Disclaimer : For Research Use or Further Manufacturing Only.