

## Human IL-27 (EBI3), His Tag, E. coli

<b>Catalog Number</b>	LDG031PHE
<b>Package</b>	5 µg / 20 µg / 100 µg / Customized package

For full product information, images and publications, please visit [our website](#).



### Specifications

#### Species of Origin

Human

#### Expression System

Escherichia coli

#### Affinity Tag

His Tag (C-term)

#### Storage Buffer

Lyophilized from a 0.2 µm filtered solution of PBS, pH 8.0.

#### Purity

>95% as determined by SDS-PAGE analysis.

#### Molecular weight

The protein has a calculated MW of 24.25 kDa. The protein migrates as 25 kDa under reducing condition (SDS-PAGE analysis).

#### Activity

Measure by its ability to induce TF-1 cells proliferation using a concentration range of 20-200 ng/mL.

#### Endotoxin Level

<0.1 EU per 1 µg of the protein by the LAL method.

#### Form

Lyophilized

### Background

#### Tainan Headquarters

+886-6-2536677

bd@leadgene.com.tw

#### Innovation & Research Center

+886-2-27065528

#### CLD Center

+886-6-2536677

**Background**

Interleukin 27 EBI3 (IL-27 EI3) predicts a molecular mass of 23.4 kDa. IL-27 is a heterodimeric cytokine that is encoded by Epstein-Barr virus-induced gene 3 (EBI3) and IL-27p28. It is expressed by antigen presenting cells and interacts with a specific cell-surface receptor complex known as IL-27 receptor (IL-27R).

**Uniprot ID**

#Q14213

**Synonyms**

IL-27 subunit beta, IL-27B, Epstein-Barr virus-induced gene 3 protein, EBV-induced gene 3 protein

**Sequence Note**

Arg21-Lys229

**Instruction****Reconstitution**

It is recommended to reconstitute the lyophilized protein in sterile H<sub>2</sub>O to a concentration of 200 µg/mL and incubate the stock solution for at least 20 min to ensure sufficient re-dissolved.

**Stability & Storage**

This product is stable after storage at:

- -20°C for 12 months in lyophilized state from date of receipt.
- -20°C or -80°C for 1 month under sterile conditions after reconstitution.

Avoid repeated freeze/thaw cycles.

**Shipping**

The product is shipped with polar packs. Upon receipt, store it immediately at -20°C or lower for long term storage.

**Image****Tainan Headquarters**

+886-6-2536677

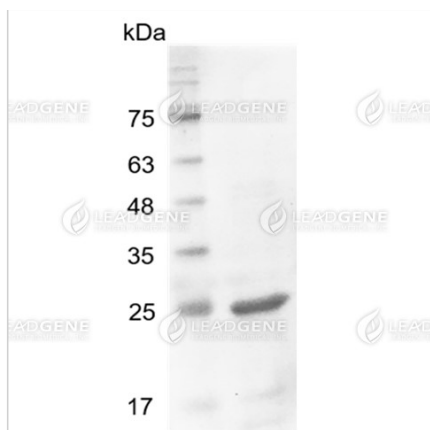
bd@leadgene.com.tw

**Innovation & Research Center**

+886-2-27065528

**CLD Center**

+886-6-2536677



SDS-PAGE analysis of recombinant human IL-27 (EBI3).

**Disclaimer :** For Research Use or Further Manufacturing Only.