

## Mouse IL-6, His Tag, E. coli

<b>Catalog Number</b>	LDG029PME
<b>Package</b>	5 µg / 20 µg / 100 µg / Customized package

For full product information, images and publications, please visit [our website](#).



### Specifications

#### Species of Origin

Mouse

#### Expression System

Escherichia coli

#### Affinity Tag

His Tag (C-term)

#### Storage Buffer

Lyophilized from a 0.2 µm filtered solution of PBS, pH 8.0.

#### Purity

>98% as determined by SDS-PAGE analysis.

#### Molecular weight

The protein has a calculated MW of 22.7 kDa. The protein migrates as 24 kDa under reducing condition (SDS-PAGE analysis).

#### Activity

Measure by its ability to induce proliferation in 7TD1 cells. The ED<sub>50</sub> for this effect is <0.01 ng/mL. The specific activity of recombinant mouse IL-6 is approximately >1x 10<sup>8</sup> IU/mg.

#### Endotoxin Level

<0.1 EU per 1 µg of the protein by the LAL method.

#### Form

Lyophilized

### Background

#### Tainan Headquarters

+886-6-2536677

bd@leadgene.com.tw

#### Innovation & Research Center

+886-2-27065528

#### CLD Center

+886-6-2536677

### Background

Interleukin-6 (IL-6) is a pleiotropic, 22-28 kDa cytokine which plays fundamental role in the acute phase response, inflammation, bone metabolism, lymphocyte differentiation and cancer progression. Deregulation of IL-6 production was also found in several diseases, including rheumatoid arthritis, Alzheimer's disease, autoimmune deficiency disease and different types of cancer.

### Uniprot ID

#P08505

### Synonyms

Interleukin-6, B-cell hybridoma Growth Factors, Interleukin HP-1

### Sequence Note

Phe25-Thr211

## Instruction

### Reconstitution

It is recommended to reconstitute the lyophilized protein in sterile H<sub>2</sub>O to a concentration of 200 µg/mL and incubate the stock solution for at least 20 min to ensure sufficient re-dissolved.

### Stability & Storage

This product is stable after storage at:

- -20°C for 12 months in lyophilized state from date of receipt.
- -20°C or -80°C for 1 month under sterile conditions after reconstitution.

Avoid repeated freeze/thaw cycles.

### Shipping

The product is shipped with polar packs. Upon receipt, store it immediately at -20°C or lower for long term storage.

## Image

### Tainan Headquarters

+886-6-2536677

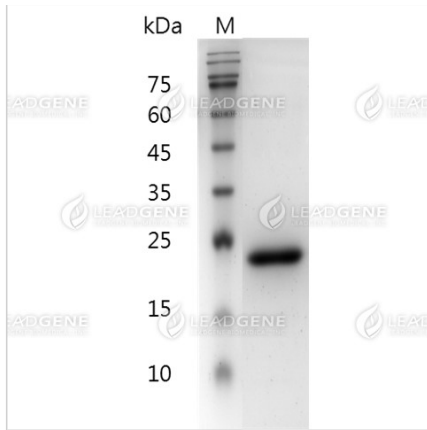
bd@leadgene.com.tw

### Innovation & Research Center

+886-2-27065528

### CLD Center

+886-6-2536677



SDS-PAGE analysis of recombinant mouse IL-6.

**Disclaimer :** For Research Use or Further Manufacturing Only.