

Human FIXa, His Tag, CHO

| | |
|----------------|--|
| Catalog Number | LDG029PHM |
| Package | 5 µg / 20 µg / 100 µg / Customized package |

For full product information, images and publications, please visit [our website](#).



Specifications

Species of Origin

Human

Expression System

CHO

Affinity Tag

His Tag (C-term)

Storage Buffer

Lyophilized from a 0.2 µm filtered solution of PBS, pH 7.4.

Purity

>90% as determined by SDS-PAGE analysis.

Molecular weight

The protein has a calculated MW of 49.54 kDa. The protein migrates as 50-60 kDa under reducing condition (SDS-PAGE analysis).

Endotoxin Level

<0.1 EU per 1 µg of the protein by the LAL method.

Mycoplasma

Not detected

Form

Lyophilized

Background

Tainan Headquarters

+886-6-2536677

bd@leadgene.com.tw

Innovation & Research Center

+886-2-27065528

CLD Center

+886-6-2536677

Background

FIXa (Factor IXa) protein is a serine protease involved in the coagulation cascade. Upon activation by Factor XIa or tissue factor-Factor VIIa complex, FIXa forms a complex with Factor VIIIa on phospholipid surfaces. This complex activates Factor X to Xa, ultimately leading to the formation of thrombin and fibrin clot formation. FIXa deficiency results in hemophilia B. Targeting FIXa activity is a therapeutic approach for controlling blood coagulation in hemophilia treatment. Understanding FIXa's role in hemostasis is crucial for developing hemophilia therapies and managing thrombotic disorders.

Uniprot ID

P00740

Synonyms

Coagulation factor IX, Christmas factor, Plasma thromboplastin component (PTC)

Sequence Note

Met1-Thr461

Instruction

Reconstitution

It is recommended to reconstitute the lyophilized protein in 4 mM HCl to a concentration not less than 200 µg/mL and incubate the stock solution for at least 20 min to ensure sufficient re-dissolved.

Stability & Storage

This product is stable after storage at:

- -20°C for 12 months in lyophilized state from date of receipt.
- -20°C or -80°C for 1 month under sterile conditions after reconstitution.

Avoid repeated freeze/thaw cycles.

Shipping

The product is shipped with polar packs. Upon receipt, store it immediately at -20°C or lower for long term storage.

Image

Tainan Headquarters

+886-6-2536677

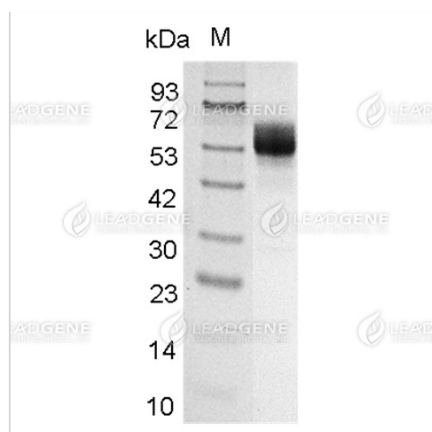
bd@leadgene.com.tw

Innovation & Research Center

+886-2-27065528

CLD Center

+886-6-2536677



SDS-PAGE analysis of recombinant human FIXa.

Disclaimer : For Research Use or Further Manufacturing Only.