

## Monkeypox Virus (MPXV) M1R Protein, His-SUMO Tag, E. coli

Catalog Number	LDG028PVE
Package	100 µg / Customized package

For full product information, images and publications, please visit [our website](#).



### Specifications

#### Species of Origin

Monkeypox Virus

#### Affinity Tag

His-SUMO Tag (N-term)

#### Purity

>95% as determined by SDS-PAGE analysis.

#### Form

Lyophilized

#### Expression System

Escherichia coli

#### Storage Buffer

Lyophilized from a 0.2 µm filtered solution of PBS, pH 7.4.

#### Molecular weight

The protein has a calculated MW of 39.82 kDa. The protein migrates as 43 kDa under reducing condition (SDS-PAGE analysis).

### Background

#### Tainan Headquarters

+886-6-2536677

bd@leadgene.com.tw

#### Innovation & Research Center

+886-2-27065528

#### CLD Center

+886-6-2536677

### Background

Monkeypox virus is a zoonosis, which could do the infection between human and animals. The virus was first detected in laboratory monkeys by researchers in 1958. Monkeypox virus is a double-stranded DNA virus which is belong the orthopoxvirus (ex. Variola, vaccinia and cowpox). The DNA structure is more stable than the SARS-COV-2, so it won't have higher mutagenesis. In clinical trial, the syndrome is like smallpox's, but the mortality rate is lower.

### Sequence Note

Met1-Asn250

### Uniprot ID

#NP\_536507.1

## Instruction

### Reconstitution

It is recommended to reconstitute the lyophilized protein in sterile H<sub>2</sub>O to a concentration of 200 µg/mL and incubate the stock solution for at least 20 min to ensure sufficient re-dissolved.

### Stability & Storage

This product is stable after storage at:

- -20°C for 12 months in lyophilized state from date of receipt.
- -20°C or -80°C for 1 month under sterile conditions after reconstitution.

Avoid repeated freeze/thaw cycles.

### Shipping

The product is shipped with polar packs. Upon receipt, store it immediately at -20°C or lower for long term storage.

## Image

### Tainan Headquarters

+886-6-2536677

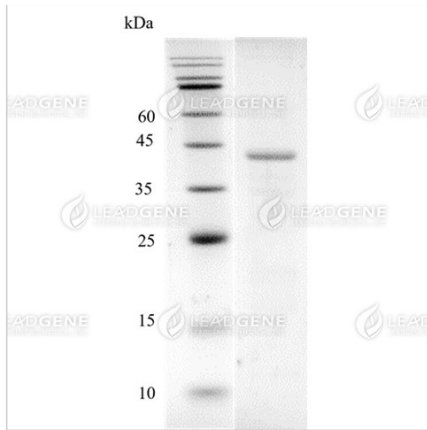
bd@leadgene.com.tw

### Innovation & Research Center

+886-2-27065528

### CLD Center

+886-6-2536677



SDS-PAGE analysis of Monkeypox  
Virus (MPXV) M1R protein.

**Disclaimer :** For Research Use or Further Manufacturing Only.