

Human IL-24, His Tag, E. coli

Catalog Number	LDG028PHE
Package	5 µg / 20 µg / 100 µg / Customized package

For full product information, images and publications, please visit [our website](#).



Specifications

Species of Origin

Human

Expression System

Escherichia coli

Affinity Tag

His Tag (C-term)

Storage Buffer

Lyophilized from a 0.2 µm filtered solution of PBS, pH 8.0.

Purity

>95% as determined by SDS-PAGE analysis.

Molecular weight

The protein has a calculated MW of 19.10 kDa. The protein migrates as 17 kDa under reducing condition (SDS-PAGE analysis).

Activity

Measure by its ability to chemoattract BaF3 cells transfected with human IL-20R alpha and IL-20R beta. The ED₅₀ for this effect is <120 pg/mL.

Endotoxin Level

<0.1 EU per 1 µg of the protein by the LAL method.

Form

Lyophilized

Background

Tainan Headquarters

+886-6-2536677

bd@leadgene.com.tw

Innovation & Research Center

+886-2-27065528

CLD Center

+886-6-2536677

Background

Interleukin 24 (IL-24) predicts a molecular mass of 18.2 kDa, is a cytokine belonging to the IL-10 family of cytokines that signals through IL-20R1 /IL-20R2 and IL-22R1 /IL-20R2. Its normal physiological role relates to wound healing, protection against diseases caused by bacteria.

Uniprot ID

#Q13007

Synonyms

Melanoma differentiation-associated gene 7 protein, MDA-7, Suppression of tumorigenicity 16 protein, Interleukin-24

Sequence Note

Gln52-Leu206

Instruction

Reconstitution

It is recommended to reconstitute the lyophilized protein in sterile H₂O to a concentration of 200 µg/mL and incubate the stock solution for at least 20 min to ensure sufficient re-dissolved.

Stability & Storage

This product is stable after storage at:

- -20°C for 12 months in lyophilized state from date of receipt.
- -20°C or -80°C for 1 month under sterile conditions after reconstitution.

Avoid repeated freeze/thaw cycles.

Shipping

The product is shipped with polar packs. Upon receipt, store it immediately at -20°C or lower for long term storage.

Image

Tainan Headquarters

+886-6-2536677

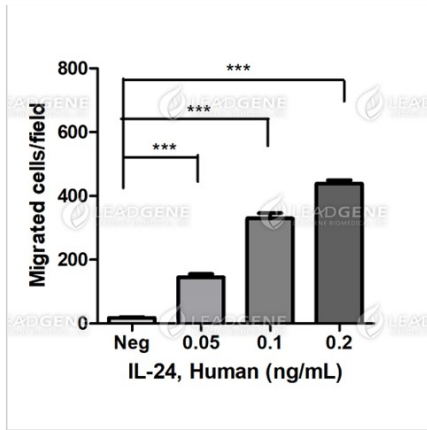
bd@leadgene.com.tw

Innovation & Research Center

+886-2-27065528

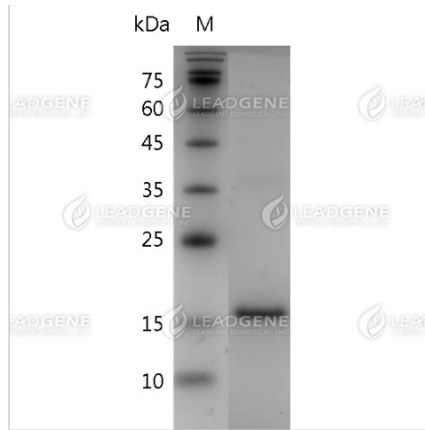
CLD Center

+886-6-2536677



Measure by its ability to chemoattract BaF3 cells transfected with human IL-20R alpha and IL-20R beta using a concentration range of 0.05-0.2 ng/mL.

Activity analysis of recombinant Human IL-24, His Tag, E. coli.



SDS-PAGE analysis of recombinant human IL-24.

Disclaimer : For Research Use or Further Manufacturing Only.