

## Human IL-6R, His Tag, CHO

<b>Catalog Number</b>	LDG027PHM
<b>Package</b>	5 µg / 20 µg / 100 µg / Customized package

For full product information, images and publications, please visit [our website](#).



### Specifications

#### Species of Origin

Human

#### Expression System

CHO

#### Affinity Tag

His Tag (C-term)

#### Storage Buffer

Lyophilized from a 0.2 µm filtered solution of PBS, pH 7.4.

#### Purity

>90% as determined by SDS-PAGE analysis.

#### Molecular weight

The protein has a calculated MW of 39.35 kDa. The protein migrates as 55-65 kDa under reducing condition (SDS-PAGE analysis).

#### Endotoxin Level

<0.1 EU per 1 µg of the protein by the LAL method.

#### Mycoplasma

Not detected

#### Form

Lyophilized

### Background

#### Tainan Headquarters

+886-6-2536677

bd@leadgene.com.tw

#### Innovation & Research Center

+886-2-27065528

#### CLD Center

+886-6-2536677

### Background

IL-6R (Interleukin-6 Receptor) protein is a transmembrane receptor that binds to interleukin-6 (IL-6), a pro-inflammatory cytokine. Upon ligand binding, IL-6R activates downstream signaling cascades involved in immune responses, inflammation, and acute-phase reactions. IL-6R exists in two forms: membrane-bound (mIL-6R) and soluble (sIL-6R). Dysregulation of IL-6R signaling is implicated in various inflammatory diseases and cancers. Targeting IL-6R signaling, either by blocking IL-6R or IL-6, has emerged as a therapeutic strategy for treating inflammatory disorders and cancers. Understanding IL-6R's roles in immune regulation and disease pathogenesis is crucial for developing targeted therapies.

### Uniprot ID

NP\_000556.1

### Synonyms

Interleukin-6 receptor subunit alpha, IL-6 receptor subunit alpha, IL-6R subunit alpha, IL-6R-alpha, IL-6RA, IL-6R 1, Membrane glycoprotein 80 (gp80), Soluble interleukin-6 receptor subunit alpha, CD126

### Sequence Note

Met1-Ser232

## Instruction

### Reconstitution

It is recommended to reconstitute the lyophilized protein in 4 mM HCl to a concentration of 200 µg/mL and incubate the stock solution for at least 20 min to ensure sufficient re-dissolved.

### Stability & Storage

This product is stable after storage at:

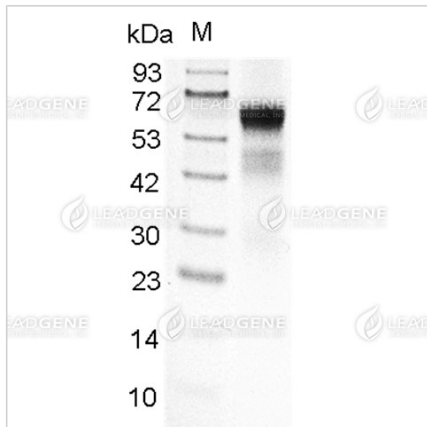
- -20°C for 12 months in lyophilized state from date of receipt.
- -20°C or -80°C for 1 month under sterile conditions after reconstitution.

Avoid repeated freeze/thaw cycles.

### Shipping

The product is shipped with polar packs. Upon receipt, store it immediately at -20°C or lower for long term storage.

## Image



SDS-PAGE analysis of recombinant human IL-6R.

**Disclaimer :** For Research Use or Further Manufacturing Only.