

## Human IL-23 (p19), His Tag, E. coli

<b>Catalog Number</b>	LDG027PHE
<b>Package</b>	5 µg / 20 µg / 100 µg / Customized package

For full product information, images and publications, please visit [our website](#).



### Specifications

#### Species of Origin

Human

#### Expression System

Escherichia coli

#### Affinity Tag

His Tag (N-term)

#### Storage Buffer

Lyophilized from a 0.2 µm filtered solution of PBS, pH 8.0.

#### Purity

>95% as determined by SDS-PAGE analysis.

#### Molecular weight

The protein has a calculated MW of 19.49 kDa. The protein migrates as 17 kDa under reducing condition (SDS-PAGE analysis).

#### Activity

Measured by its ability to induce IL-17 secretion in mouse splenocytes. The ED<sub>50</sub> for this effect is <0.5 ng/mL.

#### Endotoxin Level

<0.1 EU per 1 µg of the protein by the LAL method.

#### Form

Lyophilized

### Background

#### Tainan Headquarters

+886-6-2536677

bd@leadgene.com.tw

#### Innovation & Research Center

+886-2-27065528

#### CLD Center

+886-6-2536677

### Background

Interleukin 23 p19(IL-23p19) predicts a molecular mass of 20.7 kDa. Interleukin 23 is a heterodimeric cytokine composed of an IL-12p40 subunit that is shared with IL-12 and the IL-23p19 subunit. The receptor of IL23 is formed by the beta 1 subunit of IL12 (IL12RB1) and an IL23 specific subunit, IL23R. Both IL23 and IL12 can activate the transcription activator STAT4 and stimulate the production of interferon-gamma (IFN-gamma).

### Uniprot ID

#Q9NPF7

### Synonyms

IL-23 subunit alpha, IL-23-A, Interleukin-23 subunit p19, IL-23p19

### Sequence Note

Arg20-Pro189

## Instruction

### Reconstitution

It is recommended to reconstitute the lyophilized protein in sterile H<sub>2</sub>O to a concentration of 200 µg/mL and incubate the stock solution for at least 20 min to ensure sufficient re-dissolved.

### Stability & Storage

This product is stable after storage at:

- -20°C for 12 months in lyophilized state from date of receipt.
- -20°C or -80°C for 1 month under sterile conditions after reconstitution.

Avoid repeated freeze/thaw cycles.

### Shipping

The product is shipped with polar packs. Upon receipt, store it immediately at -20°C or lower for long term storage.

## Image

### Tainan Headquarters

+886-6-2536677

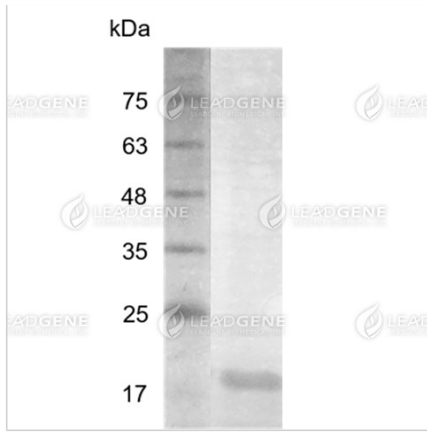
bd@leadgene.com.tw

### Innovation & Research Center

+886-2-27065528

### CLD Center

+886-6-2536677



SDS-PAGE analysis of recombinant human IL-23 p19.

**Disclaimer :** For Research Use or Further Manufacturing Only.