

## Human M-CSF, His Tag, HEK293

<b>Catalog Number</b>	LDG026PHM
<b>Package</b>	5 µg / 20 µg / 100 µg / Customized package

For full product information, images and publications, please visit [our website](#).



### Specifications

#### Species of Origin

Human

#### Expression System

HEK293

#### Affinity Tag

His Tag (C-term)

#### Storage Buffer

Lyophilized from a 0.2 µm filtered solution of PBS, pH 7.4.

#### Purity

>95% as determined by SDS-PAGE analysis.

#### Molecular weight

The protein has a calculated MW of 19.21 kDa. The protein migrates as 20 kDa under reducing condition (SDS-PAGE analysis).

#### Endotoxin Level

<0.1 EU per 1 µg of the protein by the LAL method.

#### Form

Lyophilized

### Background

#### Tainan Headquarters

+886-6-2536677

bd@leadgene.com.tw

#### Innovation & Research Center

+886-2-27065528

#### CLD Center

+886-6-2536677

### Background

M-CSF, or Macrophage Colony-Stimulating Factor, is a crucial growth factor that drives the production and development of macrophages, essential cells in the immune system. It stimulates the differentiation of stem cells into macrophages and promotes their survival and activity. M-CSF plays a vital role in various immune responses, including fighting infections, wound healing, and tissue repair. It also contributes to bone metabolism and lipoprotein clearance. Dysregulation of M-CSF signaling can contribute to inflammatory diseases and certain cancers. Therefore, M-CSF is an important therapeutic target for various conditions, and its levels can be used as a biomarker for disease progression.

### Uniprot ID

P09603

### Synonyms

CSF-1, Lanimostim, Proteoglycan macrophage colony-stimulating factor (PG-M-CSF)

### Sequence Note

Glu33-Gln181

## Instruction

### Reconstitution

It is recommended to reconstitute the lyophilized protein in sterile H<sub>2</sub>O to a concentration of 200 µg/mL and incubate the stock solution for at least 20 min to ensure sufficient re-dissolved.

### Stability & Storage

This product is stable after storage at:

- -20°C for 12 months in lyophilized state from date of receipt.
- -20°C or -80°C for 1 month under sterile conditions after reconstitution.

Avoid repeated freeze/thaw cycles.

### Shipping

The product is shipped with polar packs. Upon receipt, store it immediately at -20°C or lower for long term storage.

#### Tainan Headquarters

+886-6-2536677

✉ [bd@leadgene.com.tw](mailto:bd@leadgene.com.tw)

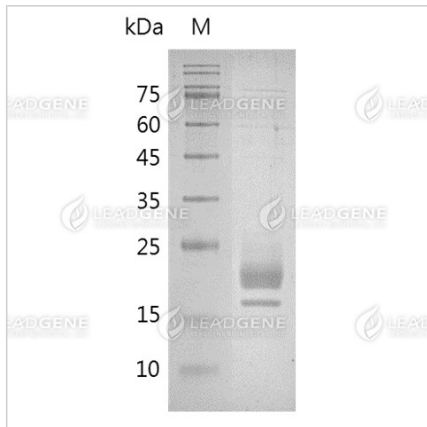
#### Innovation & Research Center

+886-2-27065528

#### CLD Center

+886-6-2536677

Image



SDS-PAGE analysis of recombinant human M-CSF.

**Disclaimer :** For Research Use or Further Manufacturing Only.