

Mycoplasma pneumoniae P1 Protein, His tag, E. coli

| | |
|----------------|--|
| Catalog Number | LDG025POE |
| Package | 5 µg / 20 µg / 100 µg / Customized package |

For full product information, images and publications, please visit [our website](#).



Specifications

Species of Origin

Mycoplasma pneumoniae

Affinity Tag

His Tag (C-term)

Purity

>95% as determined by SDS-PAGE analysis.

Endotoxin Level

<0.1 EU per 1 µg of the protein by the LAL method.

Expression System

Escherichia coli

Storage Buffer

Lyophilized from a 0.2 µm filtered solution of PBS, pH 7.4

Molecular weight

The protein has a calculated MW of 25.39 kDa. The protein migrates as 35 kDa under reducing condition (SDS-PAGE analysis).

Form

Lyophilized

Background

Tainan Headquarters

+886-6-2536677

bd@leadgene.com.tw

Innovation & Research Center

+886-2-27065528

CLD Center

+886-6-2536677

Background

The *Mycoplasma pneumoniae* P1 protein is a key adhesin involved in the attachment of the bacterium to respiratory epithelial cells, facilitating infection. This protein plays a crucial role in the pathogenesis of *Mycoplasma pneumoniae* respiratory infections, such as bronchitis and pneumonia. P1 protein mediates interactions between the bacterium and host cells, contributing to colonization and evasion of host immune responses. Understanding the function and structure of P1 protein is essential for developing targeted therapies and vaccines against *Mycoplasma pneumoniae* infections.

Uniprot ID

P11311

Synonyms

Attachment protein, Cytadhesin P1

Sequence Note

Ser1287-Gln1518

Instruction

Reconstitution

It is recommended to reconstitute the lyophilized protein in sterile H₂O to a concentration of 200 µg/mL and incubate the stock solution for at least 20 min to ensure sufficient re-dissolved.

Stability & Storage

This product is stable after storage at:

- -20°C for 12 months in lyophilized state from date of receipt.
- -20°C or -80°C for 1 month under sterile conditions after reconstitution.

Avoid repeated freeze/thaw cycles.

Shipping

The product is shipped with polar packs. Upon receipt, store it immediately at -20°C or lower for long term storage.

Image

Tainan Headquarters

+886-6-2536677

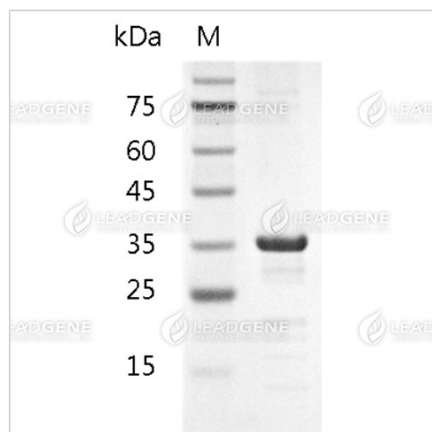
✉ bd@leadgene.com.tw

Innovation & Research Center

+886-2-27065528

CLD Center

+886-6-2536677



SDS-PAGE analysis of recombinant P1 protein.

Disclaimer : For Research Use or Further Manufacturing Only.