

LeadGMP® Human EGF Protein, His Tag, E. coli

Catalog Number LDG024PHE-GMP

Package 100 µg / 1 mg

For full product information, images and publications, please visit [our website](#).



Specifications

Species of Origin

Human

Expression System

Escherichia coli

Affinity Tag

His Tag (C-term)

Storage Buffer

Lyophilized from a 0.2 µm filtered solution of PBS, pH 8.0.

Purity

>97% as determined by SDS-PAGE analysis.

Molecular weight

The protein has a calculated MW of 7.16 kDa. The protein migrates as 9-11 kDa under reducing condition (SDS-PAGE analysis).

Activity

Measure by its ability to induce 3T3 cells proliferation. The ED₅₀ for this effect is <1.0 ng/mL. The specific activity of recombinant human EGF is approximately >1.0 x 10⁶ IU/mg.

Endotoxin Level

<0.05 EU per 1 µg of the protein by the LAL method.

Mycoplasma

Not detected

Form

Lyophilized

Background

Tainan Headquarters

+886-6-2536677

bd@leadgene.com.tw

Innovation & Research Center

+886-2-27065528

CLD Center

+886-6-2536677

Background

Human epidermal growth factor (EGF) is a 6 kDa cytokine with 53 amino acid residues. EGF is mainly secreted from ectodermal cells, monocytes, kidney and duodenal glands. Upon binding to its receptor, EGFR, EGF acts to stimulate cell growth and proliferation of epithelial cells, play important roles in many developmental processes including accelerate tooth eruption, inhibits gastric acid secretion, and involve in wound healing.

Uniprot ID

P01133

Synonyms

Epidermal Growth Factor, Urogastrone, URG

Sequence Note

Asn971-Arg1023

Instruction

Reconstitution

It is recommended to reconstitute the lyophilized protein in sterile H₂O to a concentration not less than 0.5 mg/mL and incubate the stock solution for at least 20 min to ensure sufficient re-dissolved.

Shipping

The product is shipped with polar packs. Upon receipt, store it immediately at -20°C or lower for long term storage.

Tainan Headquarters

+886-6-2536677

bd@leadgene.com.tw

Innovation & Research Center

+886-2-27065528

CLD Center

+886-6-2536677

Stability & Storage

This product is stable after storage at:

- -20°C for 12 months in lyophilized state from date of receipt.
- -20°C or -80°C for 1 month under sterile conditions after reconstitution.

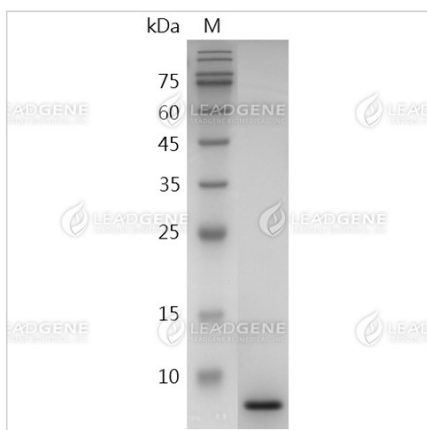
Avoid repeated freeze/thaw cycles.

Manufacturing Specifications

LeadGMP® recombinant proteins are manufactured in ISO 13485:2016 and GMP certified facility. The processes include:

- Animal-free reagent and laboratory
- Manufactured and tested under GMP guideline
- Testing and traceability of raw material
- Records of the maintenance and equipment calibration
- Personnel training records
- Batch-to-batch consistency
- Documentation of QA control and process changes
- Manufactured and tested under an ISO 13485:2016 certified quality management system
- Stability monitor of product shelf-life

Image



SDS-PAGE analysis of LeadGMP®
EGF, Human

Disclaimer : For Research Use or Further Manufacturing Only.

Tainan Headquarters

+886-6-2536677

bd@leadgene.com.tw

Innovation & Research Center

+886-2-27065528

CLD Center

+886-6-2536677