

## Human IL-20, His Tag, E. coli

|                |  |
|----------------|--|
| Catalog Number | LDG024PHE                                  |
| Package        | 5 µg / 20 µg / 100 µg / Customized package |

For full product information, images and publications, please visit [our website](#).



### Specifications

#### Species of Origin

Human

#### Affinity Tag

His Tag (C-term)

#### Purity

>98% as determined by SDS-PAGE analysis.

#### Activity

Measure by its ability to chemoattract BaF3 cells transfected with human IL-20R alpha and IL-20R beta. The ED<sub>50</sub> for this effect is <0.2 ng/mL.

#### Form

Lyophilized

#### Expression System

Escherichia coli

#### Storage Buffer

Lyophilized from a 0.2 µm filtered solution of PBS, pH 8.0.

#### Molecular weight

The protein has a calculated MW of 18.47 kDa. The protein migrates as 16 kDa under reducing condition (SDS-PAGE analysis).

#### Endotoxin Level

<0.1 EU per 1 µg of the protein by the LAL method.

### Background

#### Tainan Headquarters

+886-6-2536677

bd@leadgene.com.tw

#### Innovation & Research Center

+886-2-27065528

#### CLD Center

+886-6-2536677

### Background

Interleukin 20 (IL-20) predicts a molecular mass of 17.6 kDa. The IL-20 subfamily of cytokines is comprised of IL-19, IL-20, IL-22, IL-24, and IL-26. It regulates of differentiation of keratinocytes during inflammation, the expansion of multipotential hematopoietic progenitor cells.

### Uniprot ID

#Q9NYY1

### Synonyms

Cytokine Zcyto10, Interleukin-20

### Sequence Note

Leu25-Glu176

## Instruction

### Reconstitution

It is recommended to reconstitute the lyophilized protein in sterile H<sub>2</sub>O to a concentration of 200 µg/mL and incubate the stock solution for at least 20 min to ensure sufficient re-dissolved.

### Stability & Storage

This product is stable after storage at:

- -20°C for 12 months in lyophilized state from date of receipt.
- -20°C or -80°C for 1 month under sterile conditions after reconstitution.

Avoid repeated freeze/thaw cycles.

### Shipping

The product is shipped with polar packs. Upon receipt, store it immediately at -20°C or lower for long term storage.

## Image

### Tainan Headquarters

+886-6-2536677

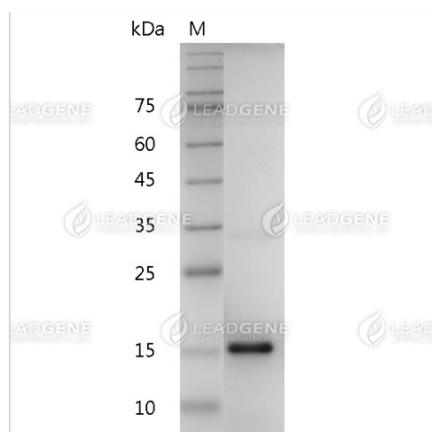
bd@leadgene.com.tw

### Innovation & Research Center

+886-2-27065528

### CLD Center

+886-6-2536677



SDS-PAGE analysis of recombinant human IL-20.

**Disclaimer :** For Research Use or Further Manufacturing Only.