

## Mouse IL-1 Beta, His Tag, E. coli

Catalog Number	LDG023PME
Package	5 µg / 20 µg / 100 µg / Customized package

For full product information, images and publications, please visit [our website](#).



### Specifications

#### Species of Origin

Mouse

#### Affinity Tag

His Tag (C-term)

#### Purity

>98% as determined by SDS-PAGE analysis.

#### Activity

Measure by its ability to induce D10.G4.1 cells proliferation. The ED<sub>50</sub> for this effect is <8 pg/mL. The specific activity of recombinant mouse IL-1 beta is approximately >1.2x 10<sup>8</sup> IU/mg.

#### Form

Lyophilized

#### Expression System

Escherichia coli

#### Storage Buffer

Lyophilized from a 0.2 µm filtered solution of PBS, pH 7.4.

#### Molecular weight

The protein has a calculated MW of 18.3 kDa. The protein migrates as 17 kDa under reducing condition (SDS-PAGE analysis).

#### Endotoxin Level

<0.1 EU per 1 µg of the protein by the LAL method.

### Background

#### Tainan Headquarters

+886-6-2536677

bd@leadgene.com.tw

#### Innovation & Research Center

+886-2-27065528

#### CLD Center

+886-6-2536677

**Background**

Interleukin-1 beta (IL-1 $\beta$ ) is a major cytokine expressed in macrophage, NK cells, monocytes, and neutrophils. It also plays fundamental role in inflammatory response, including monocyte activation, which is essential for the host defense and pathogen resistance. Pro-IL-1 $\beta$  is cleaved by cytosolic caspase 1 to form mature IL-1 $\beta$ .

**Uniprot ID**

#P10749

**Synonyms**

Interleukin-1 beta

**Sequence Note**

Val118-Ser269

**Instruction****Reconstitution**

It is recommended to reconstitute the lyophilized protein in sterile H<sub>2</sub>O to a concentration of 200  $\mu$ g/mL and incubate the stock solution for at least 20 min to ensure sufficient re-dissolved.

**Stability & Storage**

This product is stable after storage at:

- -20°C for 12 months in lyophilized state from date of receipt.
- -20°C or -80°C for 1 month under sterile conditions after reconstitution.

Avoid repeated freeze/thaw cycles.

**Shipping**

The product is shipped with polar packs. Upon receipt, store it immediately at -20°C or lower for long term storage.

**Image****Tainan Headquarters**

+886-6-2536677

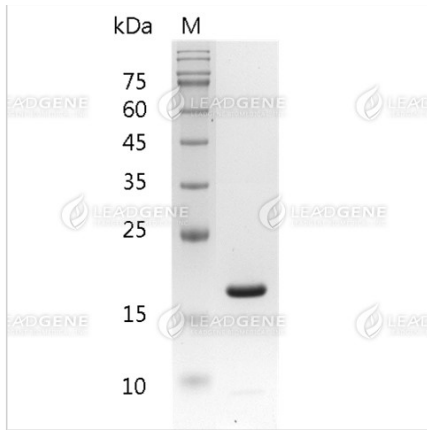
bd@leadgene.com.tw

**Innovation & Research Center**

+886-2-27065528

**CLD Center**

+886-6-2536677



SDS-PAGE analysis of recombinant  
mouse IL-1 beta

**Disclaimer :** For Research Use or Further Manufacturing Only.