

Human IL-19, His Tag, E. coli

Catalog Number	LDG023PHE
Package	5 µg / 20 µg / 100 µg / Customized package

For full product information, images and publications, please visit [our website](#).



Specifications

Species of Origin

Human

Affinity Tag

His Tag (C-term)

Purity

>98% as determined by SDS-PAGE analysis.

Activity

Measure by its ability to induce proliferation in BaF3 cells transfected with human IL-20 R alpha and human IL-20 R beta. The ED₅₀ for this effect is <1.2 ng/mL

Form

Lyophilized

Expression System

Escherichia coli

Storage Buffer

Lyophilized from a 0.2 µm filtered solution of PBS, pH 8.0.

Molecular weight

The protein has a calculated MW of 18.69 kDa. The protein migrates as 18 kDa under reducing condition (SDS-PAGE analysis).

Endotoxin Level

<0.1 EU per 1 µg of the protein by the LAL method.

Background

Tainan Headquarters

+886-6-2536677

bd@leadgene.com.tw

Innovation & Research Center

+886-2-27065528

CLD Center

+886-6-2536677

Background

Interleukin 19 (IL-19) predicts a molecular mass of 35.8 kDa, is a type of anti-inflammatory cytokine. It promotes the Th2 T-cell response which supports an anti-inflammatory lymphocyte phenotype, dampens the Th1 T-cell response and IFN γ secretion, increases IL-10 expression in peripheral blood mononuclear cells, and inhibits the production of IgG from B cells.

Uniprot ID

#Q9UHD0

Synonyms

Melanoma differentiation-associated protein-like protein, NG.1, Interleukin-19

Sequence Note

Leu25-Ala177

Instruction

Reconstitution

It is recommended to reconstitute the lyophilized protein in sterile H₂O to a concentration of 200 μ g/mL and incubate the stock solution for at least 20 min to ensure sufficient re-dissolved.

Stability & Storage

This product is stable after storage at:

- -20°C for 12 months in lyophilized state from date of receipt.
- -20°C or -80°C for 1 month under sterile conditions after reconstitution.

Avoid repeated freeze/thaw cycles.

Shipping

The product is shipped with polar packs. Upon receipt, store it immediately at -20°C or lower for long term storage.

Image

Tainan Headquarters

+886-6-2536677

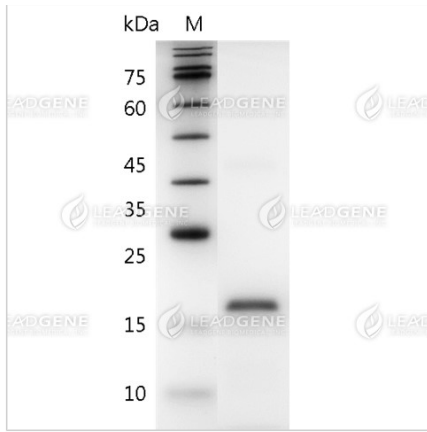
✉ bd@leadgene.com.tw

Innovation & Research Center

+886-2-27065528

CLD Center

+886-6-2536677



SDS-PAGE analysis of recombinant human IL-19.

Disclaimer : For Research Use or Further Manufacturing Only.