

Anti-TERT Antibody [Clone 54-2]

Catalog Number	LDG0232YA
Package	100 µg / Customized package

For full product information, images and publications, please visit [our website](#).



Overview

Description

The TERT antibody targets human telomerase reverse transcriptase (hTERT), the catalytic subunit of telomerase, which plays a crucial role in maintaining telomere length and cellular immortality. hTERT is highly expressed in most cancer cells, making the hTERT antibody widely used in cancer research and studies related to cellular aging.

Product Note

Recommended dilution factor:

ELISA: 1:5000-20000

WB: 1:1000-5000

IFA: 1:50-500

Note: Working dilution for specific application should be determined by the investigator to obtain the best conditions.

Specifications

Host

Mouse

Clonality

Monoclonal

Isotype

IgG1

Clone Name

Clone 54-2

Immunogen

Human TERT Protein

Reactivity

Human

Application

ELISA, IFA, WB

Conjugation

Unconjugated

Tainan Headquarters

+886-6-2536677

bd@leadgene.com.tw

Innovation & Research Center

+886-2-27065528

CLD Center

+886-6-2536677

Concentration

1 mg/mL

Form

Liquid

Storage Buffer

Phosphate Buffered Saline containing 0.03%
Proclin300, pH 7.4.

Background**Synonyms**

Telomerase Reverse Transcriptase (TERT), hTERT,
EST2, TP2 (Telomerase-associated Protein 2),
Telomerase Catalytic Subunit

Instruction**Shipping**

The product is shipped with polar packs. Upon receipt,
store it immediately at -20°C or lower for long term
storage.




Stability & Storage

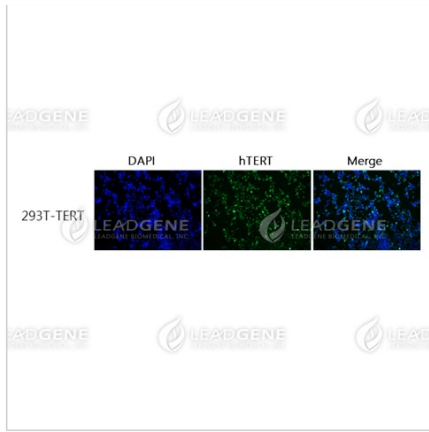
This product is stable after storage at:

- 2-8°C for 2 weeks under sterile conditions from date of receipt.
- -20°C or -80°C for 12 months under sterile conditions from date of receipt.

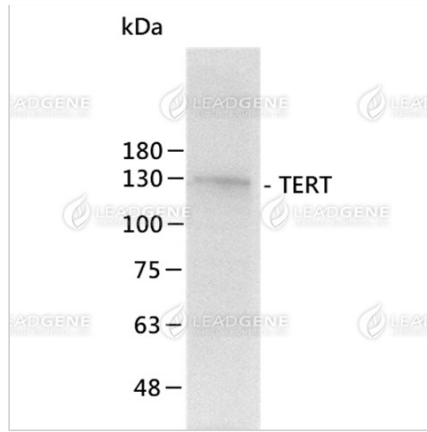
Avoid repeated freeze/thaw cycles.

Suggestion: Divide antibody into several vials. Keep only vials for usage at 2-8°C.

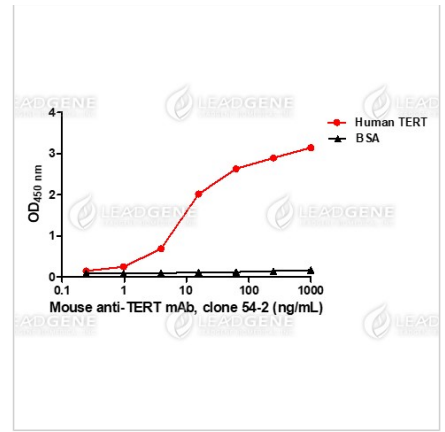
Image**Tainan Headquarters** +886-6-2536677 bd@leadgene.com.tw**Innovation & Research Center** +886-2-27065528**CLD Center** +886-6-2536677



Immunofluorescence: 293T cells were transfected with TERT plasmid and fixed in 4% PFA, permeabilized with PBS containing 0.1% Triton X-100. Cells were stained with Anti-TERT Antibody [Clone 54-2] (1:50) followed by secondary antibodies (goat anti-Mouse IgG-iFluor 488, 1:400, green) and cell nuclei were stained with DAPI (Blue).



Western blot: TERT transfected 293T cell lysates were stained with mouse anti-TERT monoclonal antibody.



ELISA: Titration curve of anti-TERT antibody in ELISA. Red: Human TERT; Black: BSA (negative control).

Disclaimer : For Research Use or Further Manufacturing Only.