

## Mouse PSMA, His Tag, CHO

Catalog Number	LDG022PMM
Package	5 µg / 20 µg / 100 µg / Customized package

For full product information, images and publications, please visit [our website](#).



### Specifications

#### Species of Origin

Mouse

#### Affinity Tag

His Tag (N-term)

#### Purity

>95% as determined by SDS-PAGE analysis.

#### Endotoxin Level

<0.1 EU per 1 µg of the protein by the LAL method.

#### Form

Lyophilized

#### Expression System

CHO

#### Storage Buffer

Lyophilized from a 0.2 µm filtered solution of PBS, pH 7.4.

#### Molecular weight

The protein has a calculated MW of 80.41 kDa.  
The protein migrates as 93-130 kDa under reducing condition (SDS-PAGE analysis).

#### Mycoplasma

Not detected

### Background

#### Tainan Headquarters

+886-6-2536677

bd@leadgene.com.tw

#### Innovation & Research Center

+886-2-27065528

#### CLD Center

+886-6-2536677

### Background

PSMA (Prostate-Specific Membrane Antigen) protein, a transmembrane glycoprotein, is highly expressed in prostate epithelial cells and overexpressed in prostate cancer. It serves as a marker for prostate cancer diagnosis, staging, and prognosis. PSMA's enzymatic activity allows it to cleave specific substrates, facilitating nutrient uptake and tumor growth. PSMA-targeted imaging and therapy, utilizing radiolabeled ligands, show promise in detecting and treating prostate cancer. Furthermore, PSMA-based therapies are being explored for other PSMA-expressing cancers. Understanding PSMA's role in prostate cancer biology is crucial for developing targeted diagnostics and therapeutics to improve patient outcomes.

### Uniprot ID

O35409

### Synonyms

Folate hydrolase 1, Folylpoly-gamma-glutamate carboxypeptidase (FGCP), Glutamate carboxypeptidase II (GCPII), Membrane glutamate carboxypeptidase (mGCP), N-acetylated-alpha-linked acidic, dipeptidase I (NAALADase I), Prostate-specific membrane antigen homolog, Pteroylpoly-gamma-glutamate carboxypeptidase

### Sequence Note

Ile44-Ala752

## Instruction

### Reconstitution

It is recommended to reconstitute the lyophilized protein in sterile H<sub>2</sub>O to a concentration of 200 µg/mL and incubate the stock solution for at least 20 min to ensure sufficient re-dissolved.

### Stability & Storage

This product is stable after storage at:

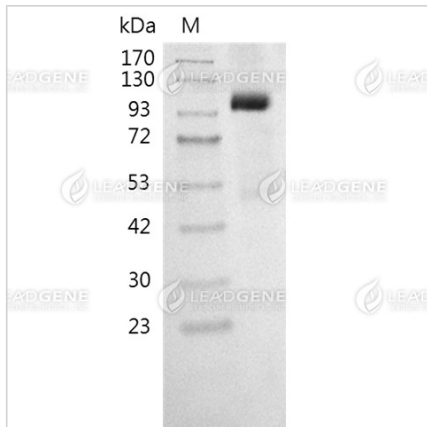
- -20°C for 12 months in lyophilized state from date of receipt.
- -20°C or -80°C for 1 month under sterile conditions after reconstitution.

Avoid repeated freeze/thaw cycles.

### Shipping

The product is shipped with polar packs. Upon receipt, store it immediately at -20°C or lower for long term storage.

## Image



SDS-PAGE analysis of recombinant mouse PSMA.

**Disclaimer :** For Research Use or Further Manufacturing Only.