

Anti-Flavivirus E IgG Antibody

Catalog Number	LDG0222YA
Package	100 µg / Customized package

For full product information, images and publications, please visit [our website](#).



Overview

Description

The Flavivirus E protein, also known as the envelope protein, is a crucial component of the Flavivirus virion (the infectious particle). Flaviviruses are a family of RNA viruses that include several significant human pathogens such as dengue virus, Zika virus, yellow fever virus, and West Nile virus.

Specifications

Clonality

Recombinant Human IgG

Reactivity

Flavivirus

Conjugation

Unconjugated

Storage Buffer

Phosphate Buffered Saline containing 0.03% Proclin300, pH 7.4.

Form

Liquid

Immunogen

Flavivirus E protein

Application

ELISA, LFA

Concentration

Lot-dependent, please refer to product label.

Specificity

Envelope protein

Instruction

Tainan Headquarters

+886-6-2536677

bd@leadgene.com.tw

Innovation & Research Center

+886-2-27065528

CLD Center

+886-6-2536677

Shipping

The product is shipped with polar packs. Upon receipt, store it immediately at -20°C or lower for long term storage.

Stability & Storage

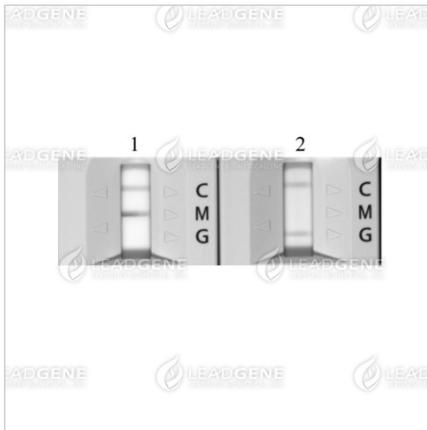
This product is stable after storage at:

- 2-8°C for 2 weeks under sterile conditions from date of receipt.
- -20°C or -80°C for 12 months under sterile conditions from date of receipt.

Avoid repeated freeze/thaw cycles.

Suggestion: Divide antibody into several vials. Keep only vials for usage at 2-8°C.

Image



The Anti-Flavivirus E IgG Antibody (LDG0222YA) can be detected by commercial Dengue virus (DENV) Antibody Rapid Test. Lane 1 : Anti-Flavivirus E IgM Antibody (LDG0223YA) Lane 2 : Anti-Flavivirus E IgG Antibody (LDG0222YA)

Disclaimer : For Research Use or Further Manufacturing Only.

Tainan Headquarters

+886-6-2536677

bd@leadgene.com.tw

Innovation & Research Center

+886-2-27065528

CLD Center

+886-6-2536677