

Human IL-17F, His Tag, E. coli

Catalog Number	LDG021PHE
Package	5 µg / 20 µg / 100 µg / Customized package

For full product information, images and publications, please visit [our website](#).



Specifications

Species of Origin

Human

Affinity Tag

His Tag (C-term)

Purity

>98% as determined by SDS-PAGE analysis.

Activity

Measure by its ability to induce IL-6 secretion in 3T3 cells. The ED₅₀ for this effect is <20 ng/mL.

Form

Lyophilized

Expression System

Escherichia coli

Storage Buffer

Lyophilized from a 0.2 µm filtered solution containing 20 mM sodium citrate, 0.2 M NaCl, pH 4.5.

Molecular weight

The protein has a calculated MW of 15.84 kDa. The protein migrates as 18 kDa under reducing condition (SDS-PAGE analysis).

Endotoxin Level

<0.1 EU per 1 µg of the protein by the LAL method.

Background

Tainan Headquarters

+886-6-2536677

bd@leadgene.com.tw

Innovation & Research Center

+886-2-27065528

CLD Center

+886-6-2536677

Background

Interleukin 17F (IL-17F) predicts a molecular mass of 30.1 kDa, is a cytokine of innate and adaptive immune system involved in antimicrobial host defense and maintenance of tissue integrity. It is involved in the development of inflammation and host defense against infection by inducing the expression of genes that encode other proinflammatory cytokines, such as tumor necrosis factor, interleukin 1, interleukin 6 and some members of the colony-stimulating factor family.

Uniprot ID

#Q96PD4

Synonyms

Cytokine ML-1, Interleukin-17F

Sequence Note

Arg31-Gln163

Instruction

Reconstitution

It is recommended to reconstitute the lyophilized protein in sterile H₂O to a concentration of 200 µg/mL and incubate the stock solution for at least 20 min to ensure sufficient re-dissolved.

Stability & Storage

This product is stable after storage at:

- -20°C for 12 months in lyophilized state from date of receipt.
- -20°C or -80°C for 1 month under sterile conditions after reconstitution.

Avoid repeated freeze/thaw cycles.

Shipping

The product is shipped with polar packs. Upon receipt, store it immediately at -20°C or lower for long term storage.

Image

Tainan Headquarters

+886-6-2536677

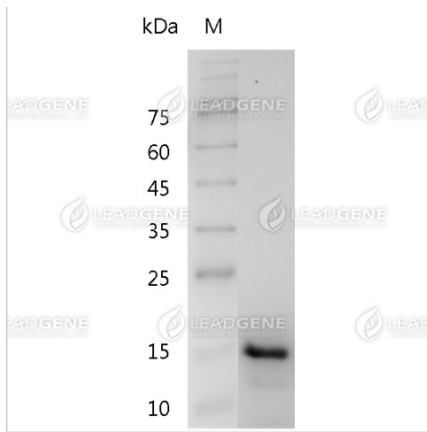
bd@leadgene.com.tw

Innovation & Research Center

+886-2-27065528

CLD Center

+886-6-2536677



SDS-PAGE analysis of recombinant human IL-17F.

Disclaimer : For Research Use or Further Manufacturing Only.