

## Swine TGF Beta 1, His Tag, E. coli

Catalog Number	LDG020PSE
Package	5 µg / 20 µg / 100 µg / Customized package

For full product information, images and publications, please visit [our website](#).



### Specifications

#### Species of Origin

Swine

#### Affinity Tag

His Tag (C-term)

#### Purity

>98% as determined by SDS-PAGE analysis.

#### Activity

Measure by its ability to inhibit IL-4-induce proliferation in HT-2 cells. The ED<sub>50</sub> for this effect is <0.1 ng/mL.

#### Form

Lyophilized

#### Expression System

Escherichia coli

#### Storage Buffer

Lyophilized from a 0.2 µm filtered solution containing 20 mM sodium citrate and 0.2 M NaCl, pH 4.5.

#### Molecular weight

The protein has a calculated MW of 13.73 kDa. The protein migrates as 11-17 kDa under reducing condition (SDS-PAGE analysis).

#### Endotoxin Level

<0.1 EU per 1 µg of the protein by the LAL method.

### Background

#### Tainan Headquarters

+886-6-2536677

bd@leadgene.com.tw

#### Innovation & Research Center

+886-2-27065528

#### CLD Center

+886-6-2536677

### Background

Transforming Growth Factors beta 1 (TGF beta 1) is the cytokine of the TGF-beta family, which is a 12.5 kDa protein containing 113 amino acid residues. TGF beta 1 is produced by white blood cell which plays an important role in inflammation, cell proliferation and differentiation. TGF beta 1 also has several functions about cancer and auto-immune diseases. TGF-beta 1 not only can activate the smad signaling but also can induce the MAPK, Rhoa and RAS.

### Uniprot ID

#P07200

### Synonyms

Transforming Growth Factors beta-1 proprotein

### Sequence Note

Ala279-Ser390

## Instruction

### Reconstitution

It is recommended to reconstitute the lyophilized protein in sterile H<sub>2</sub>O to a concentration of 200 µg/mL and incubate the stock solution for at least 20 min to ensure sufficient re-dissolved.

### Stability & Storage

This product is stable after storage at:

- -20°C for 12 months in lyophilized state from date of receipt.
- -20°C or -80°C for 1 month under sterile conditions after reconstitution.

Avoid repeated freeze/thaw cycles.

### Shipping

The product is shipped with polar packs. Upon receipt, store it immediately at -20°C or lower for long term storage.

## Image

### Tainan Headquarters

+886-6-2536677

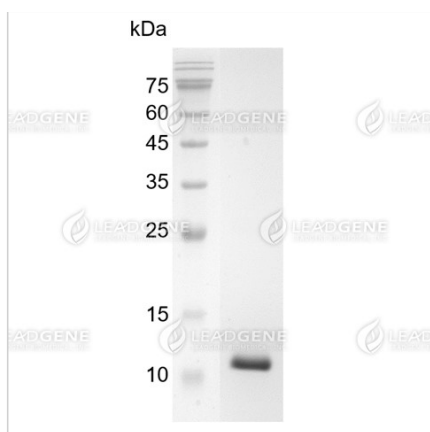
✉ [bd@leadgene.com.tw](mailto:bd@leadgene.com.tw)

### Innovation & Research Center

+886-2-27065528

### CLD Center

+886-6-2536677



SDS-PAGE analysis of recombinant  
swine TGF beta 1.

**Disclaimer :** For Research Use or Further Manufacturing Only.