

Swine IFN Gamma, His Tag, E. coli

Catalog Number	LDG019PSE
Package	5 µg / 20 µg / 100 µg / Customized package

For full product information, images and publications, please visit [our website](#).



Specifications

Species of Origin

Swine

Affinity Tag

His Tag (C-term)

Purity

>95% as determined by SDS-PAGE analysis.

Activity

Measure by its ability to protect PK15 cells infected with encephalomyocarditis (EMC) virus. The ED₅₀ for this effect is <40 pg/mL.

Form

Lyophilized

Expression System

Escherichia coli

Storage Buffer

Lyophilized from a 0.2 µm filtered solution of PBS, pH 7.4.

Molecular weight

The protein has a calculated MW of 17.7 kDa.
The protein migrates as 15 kDa under reducing condition (SDS-PAGE analysis).

Endotoxin Level

<0.01 EU per 1 µg of the protein by the LAL method.

Background

Tainan Headquarters

+886-6-2536677

bd@leadgene.com.tw

Innovation & Research Center

+886-2-27065528

CLD Center

+886-6-2536677

Background

The cytokine IFN gamma could protect cells from viral infections and belongs to the family of interferons. A lot of studies have shown that IFN gamma secreted by antigen triggered cell types, including T cells, naive CD4+ T cells, macrophages, dendritic cells, and B cells. IFN gamma plays an important role to trigger the macrophage act against a diverse group of microbial targets, and the pleiotropic molecule associated with antiproliferative, pro-apoptotic and antitumor mechanisms. Based on the effector cytokine considered as a major effector of immunity, it has been used in the treatment of several diseases.

Uniprot ID

#P17803

Synonyms

Interferon gamma

Sequence Note

Gln23-Lys166

Instruction

Reconstitution

It is recommended to reconstitute the lyophilized protein in sterile H₂O to a concentration of 200 µg/mL and incubate the stock solution for at least 20 min to ensure sufficient re-dissolved.

Stability & Storage

This product is stable after storage at:

- -20°C for 12 months in lyophilized state from date of receipt.
- -20°C or -80°C for 1 month under sterile conditions after reconstitution.

Avoid repeated freeze/thaw cycles.

Shipping

The product is shipped with polar packs. Upon receipt, store it immediately at -20°C or lower for long term storage.

Image

Tainan Headquarters

+886-6-2536677

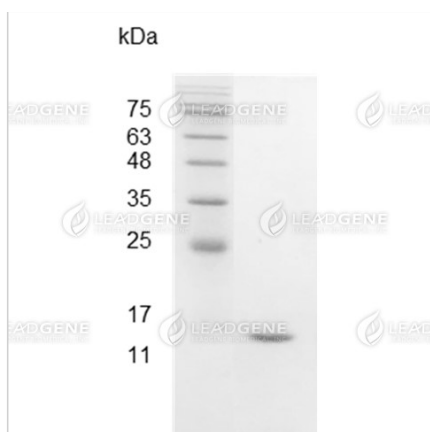
bd@leadgene.com.tw

Innovation & Research Center

+886-2-27065528

CLD Center

+886-6-2536677



SDS-PAGE analysis of recombinant
swine IFN gamma.

Disclaimer : For Research Use or Further Manufacturing Only.