

Mouse LIF, His Tag, E. coli

Catalog Number	LDG019PME
Package	5 µg / 20 µg / 100 µg / Customized package

For full product information, images and publications, please visit [our website](#).



Specifications

Species of Origin

Mouse

Affinity Tag

His Tag (N-term)

Purity

>95% as determined by SDS-PAGE analysis.

Activity

Measure by its ability to induce IL-6 secretion in M1 cells. The ED₅₀ for this effect is <0.5 ng/mL. The specific activity of recombinant mouse LIF is > 2 x 10⁶ IU/mg.

Form

Lyophilized

Expression System

Escherichia coli

Storage Buffer

Lyophilized from a 0.2 µm filtered solution of PBS, pH 7.4.

Molecular weight

The protein has a calculated MW of 20.68 kDa. The protein migrates as 17-25 kDa under reducing condition (SDS-PAGE analysis).

Endotoxin Level

<0.1 EU per 1 µg of the protein by the LAL method.

Background

Tainan Headquarters

+886-6-2536677

bd@leadgene.com.tw

Innovation & Research Center

+886-2-27065528

CLD Center

+886-6-2536677

Background

Leukemia inhibitory factor (LIF) is a pleiotropic glycoprotein, belonging to the IL-6 receptor family. Mouse LIF shares 79% sequence homology with human LIF. LIF is a 19.7 kDa protein containing 202 amino acid which high expression in human liver, bone, uterus, kidney and the central nervous system. LIF is a inducer of differentiation in M1 leukaemia cells, osteoblasts and glia. Not only stimulates proliferation of DA1 cells inhibit proliferation of corticotrophs and promote cell survival in some cell types but also induces apoptosis in others.

Uniprot ID

#P09056

Synonyms

Leukemia inhibitory factor, Differentiation-stimulating factor, D factor, LIF

Sequence Note

Ser24-Phe203

Instruction

Reconstitution

It is recommended to reconstitute the lyophilized protein in sterile H₂O to a concentration of 200 µg/mL and incubate the stock solution for at least 20 min to ensure sufficient re-dissolved.

Stability & Storage

This product is stable after storage at:

- -20°C for 12 months in lyophilized state from date of receipt.
- -20°C or -80°C for 1 month under sterile conditions after reconstitution.

Avoid repeated freeze/thaw cycles.

Shipping

The product is shipped with polar packs. Upon receipt, store it immediately at -20°C or lower for long term storage.

Image

Tainan Headquarters

+886-6-2536677

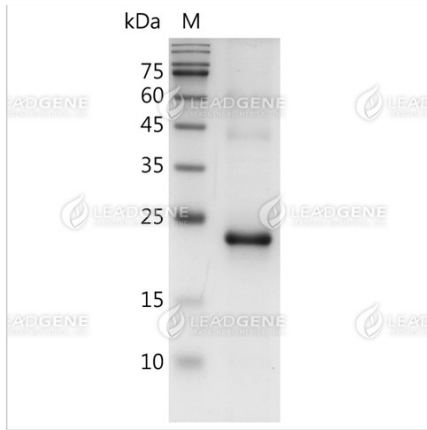
✉ bd@leadgene.com.tw

Innovation & Research Center

+886-2-27065528

CLD Center

+886-6-2536677



SDS-PAGE analysis of recombinant mouse LIF.

Disclaimer : For Research Use or Further Manufacturing Only.