

## Anti-MPXV L1R Antibody [Clone 5-1]

<b>Catalog Number</b>	LDG0190YA
<b>Package</b>	100 µg / Customized package

For full product information, images and publications, please visit [our website](#).



### Overview

#### Description

Monkeypox is a zoonotic disease caused by the Monkeypox virus (MPXV), a DNA virus that belongs to the Orthopoxvirus genus, which also includes variola virus (smallpox) and cowpox virus. The MPXV L1R protein is a type I transmembrane protein and is homologous to the vaccinia virus Copenhagen J1R protein. It plays a critical role in the virus's outer membrane and is essential for virus-host interactions. Anti-MPXV L1R Antibody [Clone 5-1] recognize Monkeypox virus (MPXV) L1R protein.

#### Product Note

Recommended dilution factor:

ELISA: 1:5000-20000

IFA: 1:500-1:1000

FACS: Assay dependent

Note: Working dilution for specific application should be determined by the investigator to obtain the best conditions.

### Specifications

#### Host

Mouse

#### Clonality

Monoclonal

#### Isotype

IgG1

#### Clone Name

clone 5-1

#### Immunogen

Recombinant MPXV L1R protein

#### Reactivity

Monkeypox virus

#### Tainan Headquarters

+886-6-2536677

bd@leadgene.com.tw

#### Innovation & Research Center

+886-2-27065528

#### CLD Center

+886-6-2536677

**Application**

ELISA, WB, IFA

**Concentration**

1 mg/mL

**Specificity**

L1R protein

**Conjugation**

Unconjugated

**Storage Buffer**

Phosphate Buffered Saline containing 0.03% ProClin 300, pH 7.4.

**Form**

Liquid

**Instruction****Shipping**

The product is shipped with polar packs. Upon receipt, store it immediately at -20°C or lower for long term storage.




**Stability & Storage**

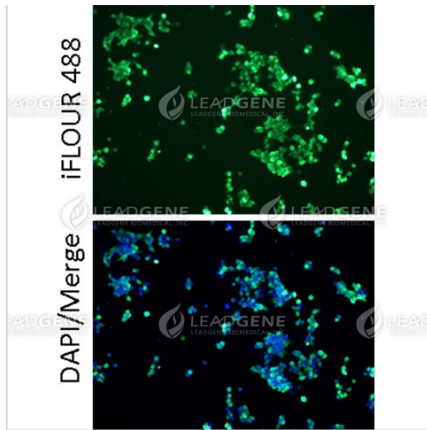
This product is stable after storage at:

- 2-8°C for 2 weeks under sterile conditions from date of receipt.
- -20°C or -80°C for 12 months under sterile conditions from date of receipt.

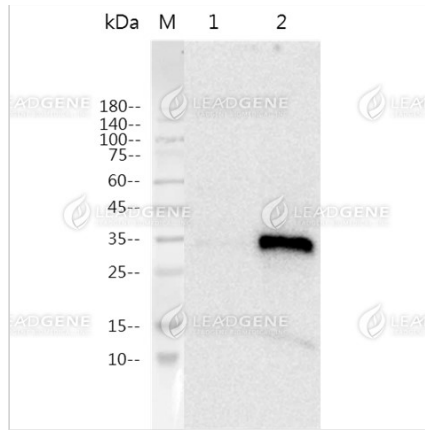
Avoid repeated freeze/thaw cycles.

Suggestion: Divide antibody into several vials. Keep only vials for usage at 2-8°C.

**Image****Tainan Headquarters** +886-6-2536677 [bd@leadgene.com.tw](mailto:bd@leadgene.com.tw)**Innovation & Research Center** +886-2-27065528**CLD Center** +886-6-2536677



Immunofluorescence analysis of Anti-MPXV L1R Antibody [Clone 5-1].



Western blotting analysis of Anti-MPXV L1R Antibody [Clone 5-1]  
 Western blot: L1R expressed 293T cell lysates were stained with mouse anti-MPXV L1R monoclonal antibody.  
 Lane 1: 293T mock cell lysate, Lane 2: 293T MPXV cell lysate.

**Disclaimer :** For Research Use or Further Manufacturing Only.