

Human PD-L1, His Tag, HEK293

Catalog Number	LDG018PHM
Package	Customized package / 100 µg

For full product information, images and publications, please visit [our website](#).



Overview

Description

PD-L1 regulates immune responses by binding to the immunoinhibitory receptor PD-1 on activated T-cells and B-cells. This interaction can suppress T-cell responses by inducing apoptosis and arresting cell-cycle progression. In cancer, PD-L1's role in reducing antigen-specific T cells can promote tumor growth and immune evasion. As a result, PD-L1 is considered as a potential therapeutic target for autoimmune diseases and cancer.

Specifications

Species of Origin

Human

Expression System

HEK293

Affinity Tag

His Tag (C-term)

Storage Buffer

Lyophilized from a 0.2 µm filtered solution of PBS, pH 7.4.

Purity

>95% as determined by SDS-PAGE analysis.

Molecular weight

The protein has a calculated MW of 26 kDa.
The protein migrates as 30-35 kDa under reducing condition (SDS-PAGE analysis).

Activity

Measure by its ability to induce adhesion in T-cell enriched PBMC cultures using a concentration range of 1-2 µg/mL.

Endotoxin Level

<0.1 EU per 1 µg of the protein by the LAL method.

Tainan Headquarters

+886-6-2536677

bd@leadgene.com.tw

Innovation & Research Center

+886-2-27065528

CLD Center

+886-6-2536677

Form

Lyophilized

Background**Background**

Programmed death-ligand 1 (PD-L1) is an immune checkpoint protein expressed on various cell types, including tumor cells. It interacts with PD-1 on T cells to suppress immune responses, enabling tumor immune evasion. Recombinant PD-L1 with a His tag, expressed in HEK293 cells, is crucial for studying PD-1/PD-L1 interactions, developing immune checkpoint inhibitors, and conducting functional assays in cancer immunotherapy research. The use of HEK293 cells ensures proper folding and post-translational modifications, maintaining biological activity.

Synonyms

CD274, B7-H1

Uniprot ID

Q9NZQ7.1

Sequence Note

Phe19-Arg238

Instruction**Reconstitution**

It is recommended to reconstitute the lyophilized protein in sterile H₂O to a concentration not less than 200 µg/mL and incubate the stock solution for at least 20 min to ensure sufficient re-dissolved.

Shipping

The product is shipped with polar packs. Upon receipt, store it immediately at -20°C or lower for long term storage.

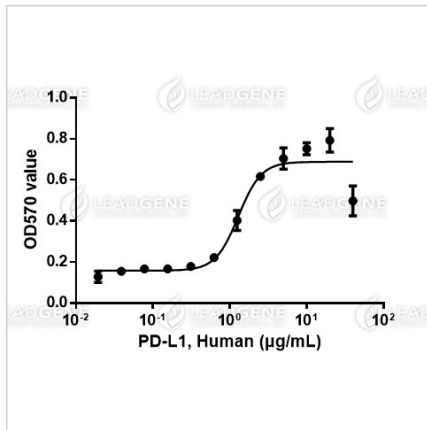
Stability & Storage

This product is stable after storage at:

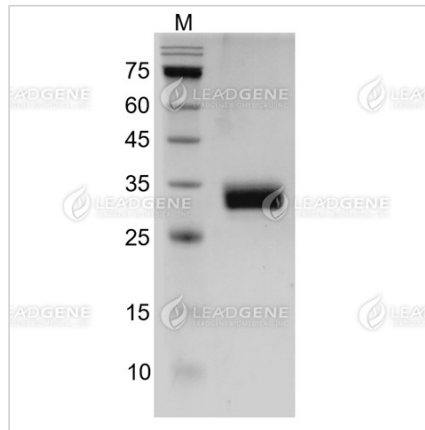
- -20°C for 12 months in lyophilized state from date of receipt.
- -20°C or -80°C for 1 month under sterile conditions after reconstitution.

Avoid repeated freeze/thaw cycles.

Image



Measure by its ability to induce adhesion in T-cell enriched PBMC cultures using a concentration range of 1-2 µg/mL.
The ED₅₀ for this effect is 1.3 µg/mL.



SDS-PAGE analysis of recombinant human PD-L1.

Disclaimer : For Research Use or Further Manufacturing Only.