

Human IL-16 (aa 2-130), His Tag, E. coli

Catalog Number	LDG018PHE
Package	5 µg / 20 µg / 100 µg / Customized package

For full product information, images and publications, please visit [our website](#).



Specifications

Species of Origin

Human

Affinity Tag

His Tag (C-term)

Purity

>95% as determined by SDS-PAGE analysis.

Endotoxin Level

<0.1 EU per 1 µg of the protein by the LAL method.

Expression System

Escherichia coli

Storage Buffer

Lyophilized from a 0.2 µm filtered solution of PBS, pH 8.0.

Molecular weight

The protein has a calculated MW of 14.12 kDa. The protein migrates as 18 kDa under reducing condition (SDS-PAGE analysis).

Form

Lyophilized

Background

Background

Interleukin 16(IL-16) predicts a molecular mass of 13.5 kDa, encoded by this gene is a pleiotropic cytokine that functions as a chemoattractant, a modulator of T cell activation, and an inhibitor of HIV replication, and signaling process of this cytokine is mediated by CD4.

Synonyms

Lymphocyte chemoattractant factor, LCF, Interleukin-16

Tainan Headquarters

+886-6-2536677

bd@leadgene.com.tw

Innovation & Research Center

+886-2-27065528

CLD Center

+886-6-2536677

Uniprot ID

#Q14005

Sequence Note

Met1203-Ser1332

Instruction
Reconstitution

It is recommended to reconstitute the lyophilized protein in sterile H₂O to a concentration of 200 µg/mL and incubate the stock solution for at least 20 min to ensure sufficient re-dissolved.

Stability & Storage

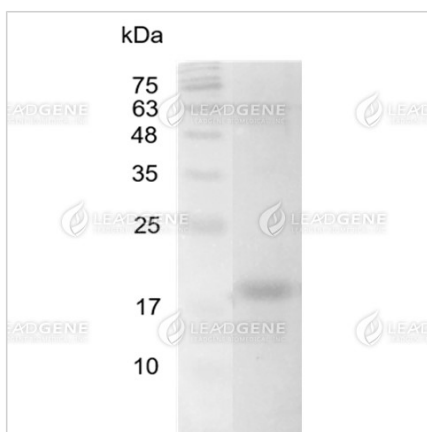
This product is stable after storage at:

- -20°C for 12 months in lyophilized state from date of receipt.
- -20°C or -80°C for 1 month under sterile conditions after reconstitution.


Avoid repeated freeze/thaw cycles.

Shipping


The product is shipped with polar packs. Upon receipt, store it immediately at -20°C or lower for long term storage.

Image


SDS-PAGE analysis of recombinant human IL-16 (aa 2-130).




Tainan Headquarters
 +886-6-2536677

 bd@leadgene.com.tw

Innovation & Research Center
 +886-2-27065528

CLD Center
 +886-6-2536677

Disclaimer : For Research Use or Further Manufacturing Only.

Tainan Headquarters +886-6-2536677 bd@leadgene.com.tw**Innovation & Research Center** +886-2-27065528**CLD Center** +886-6-2536677